

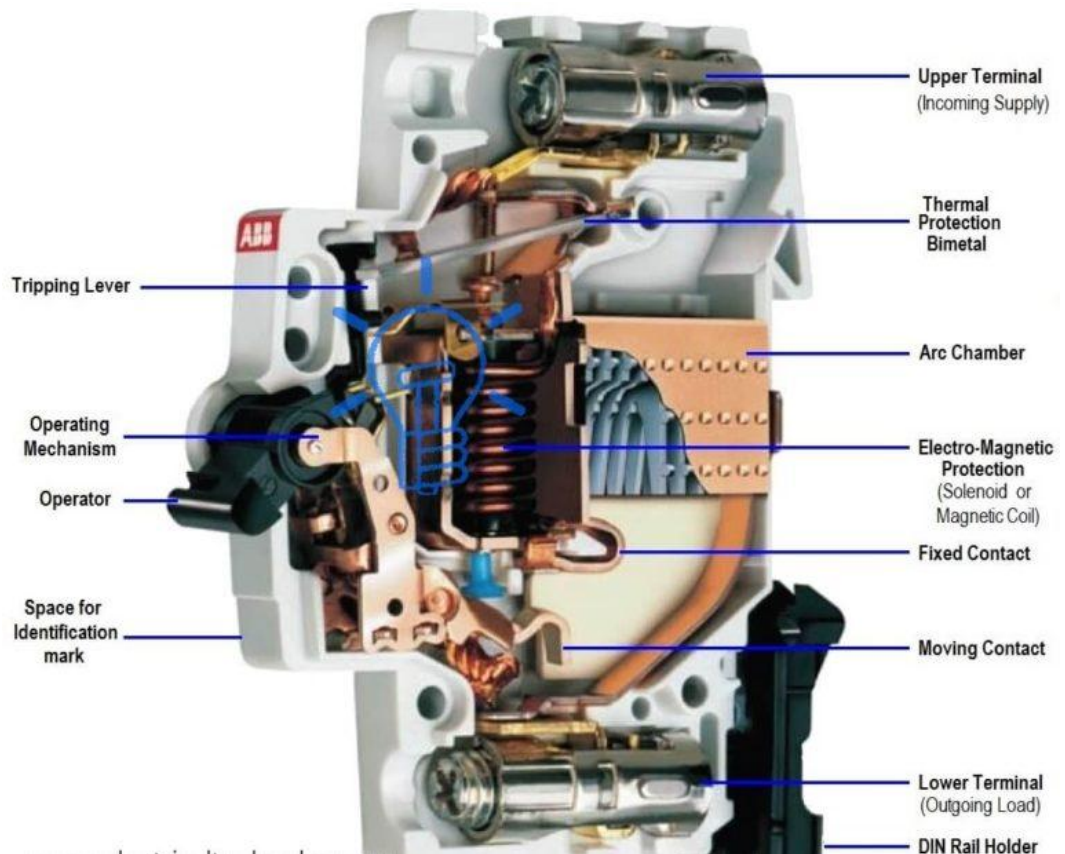




LAMPIRAN

POMPA AIR   04-6292.2.41-2003	
Negara Pembuat : China No.Seri : Model DB-105	
Daya Hisap : 9 m	Tegangan : 220 V, Frek : 50 Hz
Daya Dorong : 28 m	Daya Masukan : 230 Watt
Tinggi Total Maks : 37 m	PPM : 2850
Kapasitas : 42 ltr / mnt	Ukuran Pipa : 1" x 1"
Kapasitor : 6 μ F / 450 V	Ins. Lilitan Kelas B
Suhu Cairan Maks : 35 ° C	IPX 4
	Pelindung Suhu Motor





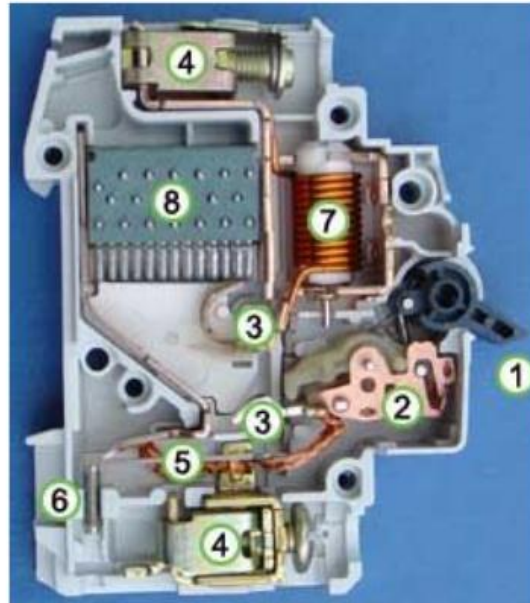


NON AUTO

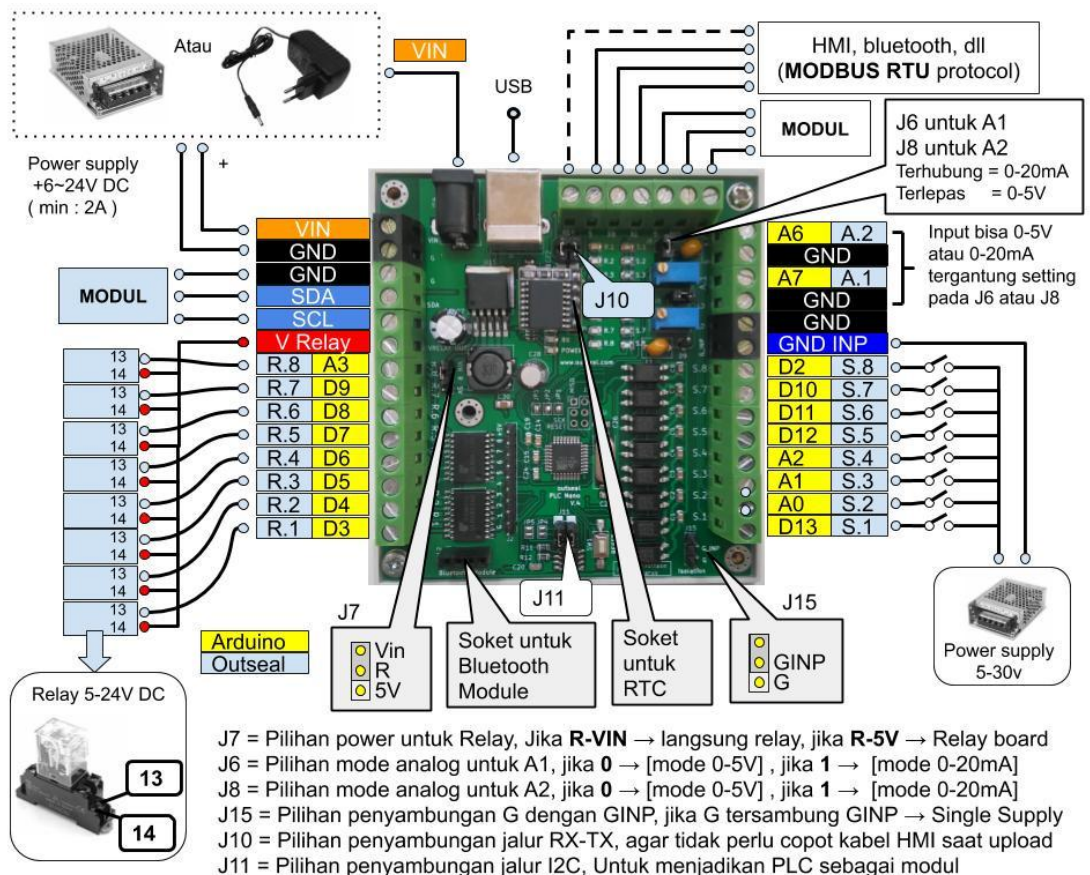
PN-125 BIT

Output (W)	: 125
Input (kW)	: 0.35
Panjang Pipa (m)	: 9
Total Head Max. (m)	: 33
Head (m)	: 5 21
Kapasitas (liter/min)	: 36 10
Pipa Hisap (inch)	: 1
Pipa Dorong (inch)	: 1

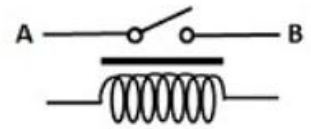
Konstruksi MCB



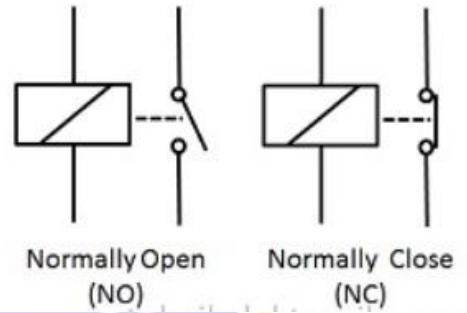
1. Actuator lever
2. Actuator mechanism
3. Contacts
4. Terminals
5. Bimetallic strip
6. Calibration screw assembly.
7. Solenoid
8. Arc divider / extinguisher



Simbol Relay



atau



SONGLE RELAY



RELAY ISO9002

SRD

1. MAIN FEATURES

- Switching capacity available by 10A in spite of small size design for highdensity P.C. board mounting technique.
- UL,CUL,TUV recognized.
- Selection of plastic material for high temperature and better chemical solution performance.
- Sealed types available.
- Simple relay



1

magnetic circuit to
 meet low cost of
 mass production.

APPLICATIONS

- Domestic appliance, office machine, audio, equipment, automobile, etc.
 (Remote control TV receiver, monitor display, audio equipment high
 rushing current use application.)

ORDERING INFORMATION

SRD	XX VDC	S	L	C
Model of relay	Nominal coil voltage	Structure	Coil sensitivity	Contact form
SRD	03 05 06 09 12 24 48 VDC	S:Sealed type F:Flux free type	L:0.36W D:0.45W	A:1 form A B:1 form B C:1 form C

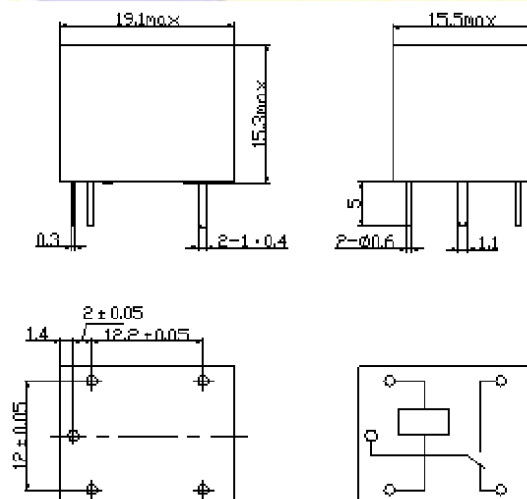
2. RATING

CCC	FILE NUMBER:CH0052885-2000	7A/240VDC
CCC	FILE NUMBER:CH0036746-99	10A/250VDC
UL /CUL	FILE NUMBER: E167996	10A/125VAC 28VDC
TUV	FILE NUMBER: R9933789	10A/240VAC 28VDC

5. DIMENSION (unit:mm)

DRILLING (unit: mm)

WIRING DIAGRAM



COIL DATA CHART (AT20°C)

Coil Sensitivity	Coil Voltage Code	Nominal Voltage (VDC)	Nominal Current (mA)	Coil Resistance (Ω) $\pm 10\%$	Power Consumption (W)	Pull-In Voltage (VDC)	Drop-Out Voltage (VDC)	Max-Allowable Voltage (VDC)
SRD (High Sensitivity)	03	03	120	25	abt. 0.36W	75%Max.	10% Min.	120%
	05	05	71.4	70				
	06	06	60	100				
	09	09	40	225				
	12	12	30	400				
	24	24	15	1600				
	48	48	7.5	6400				
SRD (Standard)	03	03	150	20	abt. 0.45W	75% Max.	10% Min.	110%
	05	05	89.3	55				
	06	06	75	80				
	09	09	50	180				
	12	12	37.5	320				
	24	24	18.7	1280				
	48	48	10	4500	abt. 0.51W			

7. CONTACT RATING

Item	Type	SRD	
		FORM C	FORM A
Contact Capacity Resistive Load ($\cos\Phi=1$)		7A 28VDC 10A 125VAC 7A 240VAC	10A 28VDC 10A 240VAC
Inductive Load ($\cos\Phi=0.4$ L/R=7msec)		3A 120VAC 3A 28VDC	5A 120VAC 5A 28VDC
Max. Allowable Voltage (at initial make/break)		250VAC/110VDC	250VAC/110VDC
Max. Allowable Power Force		800VAC/240W	1200VA/300W
Contact Material		AgCdO	AgCdO

Item	Type	SRD
Contact Resistance		100m Ω Max.
Operation Time		10msec Max.
Release Time		5msec Max.
Dielectric Strength		
Between coil & contact		1500VAC 50/60HZ (1 minute)
Between contacts		1000VAC 50/60HZ (1 minute)
Insulation Resistance		100 M Ω Min. (500VDC)
Max. ON/OFF Switching		
Mechanically		300 operation/min
Electrically		30 operation/min
Ambient Temperature		-25°C to +70°C
Operating Humidity		45 to 85% RH
Vibration		
Endurance		10 to 55Hz Double Amplitude 1.5mm
Error Operation		10 to 55Hz Double Amplitude 1.5mm
Shock		
Endurance		100G Min.
Error Operation		10G Min.
Life Expectancy		
Mechanically		10 ⁷ operations. Min. (no load)
Electrically		10 ⁵ operations. Min. (at rated coil voltage)
Weight		abt. 10grs.

The breadth of the BCH8 contactor range satisfies the most application cases. BCH8 contactors can be combined with auxiliary control, protection and indication functions. The contactors are produced according to IEC61095(GB/T17885).

BCH8 contactors can be used to remote control applications in alternative networks:

- lighting, heating, ventilation, roller blinds, sanitary hot water
- mechanical ventilation systems, etc

Application

BCH8 contactors are available in two versions:

- Contactors without manually-operated
- Contactors with manually-operated.

BCH8-16 2P BCH8-25 4P BCH8-63 2P BCH8-63 4P BCH8-100 2P



BCH8-100 4P BCH8-25M 4P BCH8-63M 2P BCH8-63M 4P

