

**Lampiran 1.** Perhitungan nilai Rf *soft coral Sinularia sp*

$$R_f = \frac{\text{Jarak yang ditempuh oleh komponen}}{\text{Jarak yang ditempuh oleh pelarut}}$$

$$R_f = \frac{2,1}{4,4} = 0,47$$



Lampiran 2. Dokumentasi penelitian



*soft coral Sinularia sp*



Proses maserasi *soft coral Sinularia sp*



Proses partsi

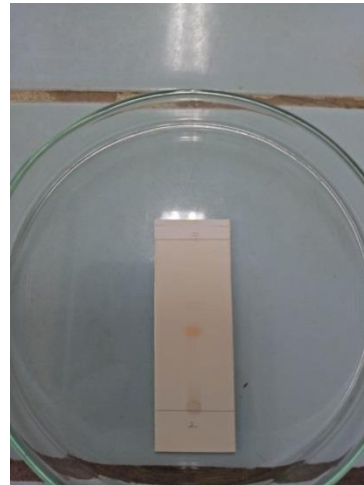


Ekstrak *soft coral Sinularia sp*





Proses Kromatografi  
Lapis Tipis



Noda pada palat KLT



Rotary Evaporator



Instrumen GC-MS yang  
digunakan



### Lampiran 3. Hasil spektrum dari GC-MS

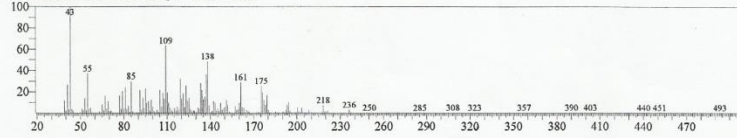
#### Hasil Penelitian *Similarity Search* Berdasarkan *Database* Senyawa 1



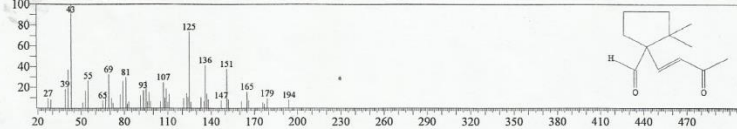
## Hasil Penelitian *Similarity Search* Berdasarkan *Database* Senyawa 2

<<Target >>

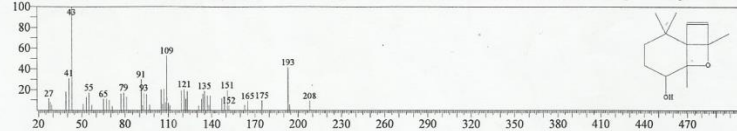
Line#2 R.Time:11.545(Scar#:1710) MassPeak:300  
RawMode:Averaged 11.540-11.550(1709-1711) BasePeak:43.05(15602)  
BG Mode:Calc. from Peak Group 1 - Event 1 Scan



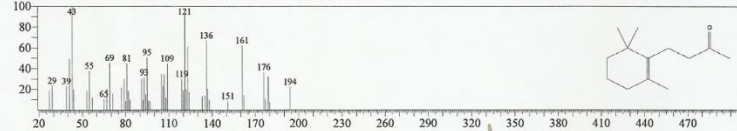
Hit#1 Entry:129558 Library:Wiley9.lib  
SI:74 Formula:C12H18O2 CAS:100557-82-2 MoWeight:194 RetIndex:0  
CompName:4,7-Methanoisobenzofuran-1-ol, 1,3,3a,4,7,7a-hexahydro- (CAS) SS 2,2-DIMETHYL-1-(3-OXO-BUT-1-ENYL)-CYCLOPENTANECARBAL



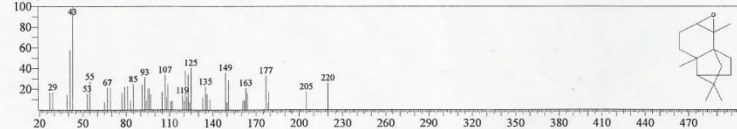
Hit#2 Entry:161169 Library:Wiley9.lib  
SI:74 Formula:C13H20O2 CAS:97371-50-1 MoWeight:208 RetIndex:0  
CompName:4,6,10,10-Tetramethyl-5-oxatricyclo[4.4.0.0(1,4)]dec-2-en-7-ol SS 4,6,10,10-TETRAMETHYL-5-OXA-TRICYCLO[4.4.0.0 1,4]DEC-2-EN-7-



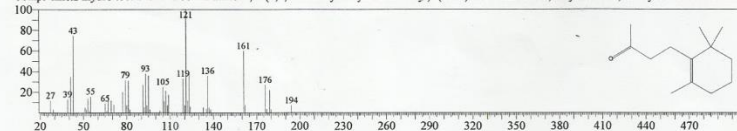
Hit#3 Entry:130438 Library:Wiley9.lib  
SI:73 Formula:C13H22O CAS:17283-81-7 MoWeight:194 RetIndex:0  
CompName:Dihydro- $\beta$ -ionone SS 2-Butanone, 4-(2,6,6-trimethyl-1-cyclohexen-1-yl)- (CAS) SS  $\beta$ -ionone, dihydro- SS 7,8-Dihydro- $\beta$ -ionone SS



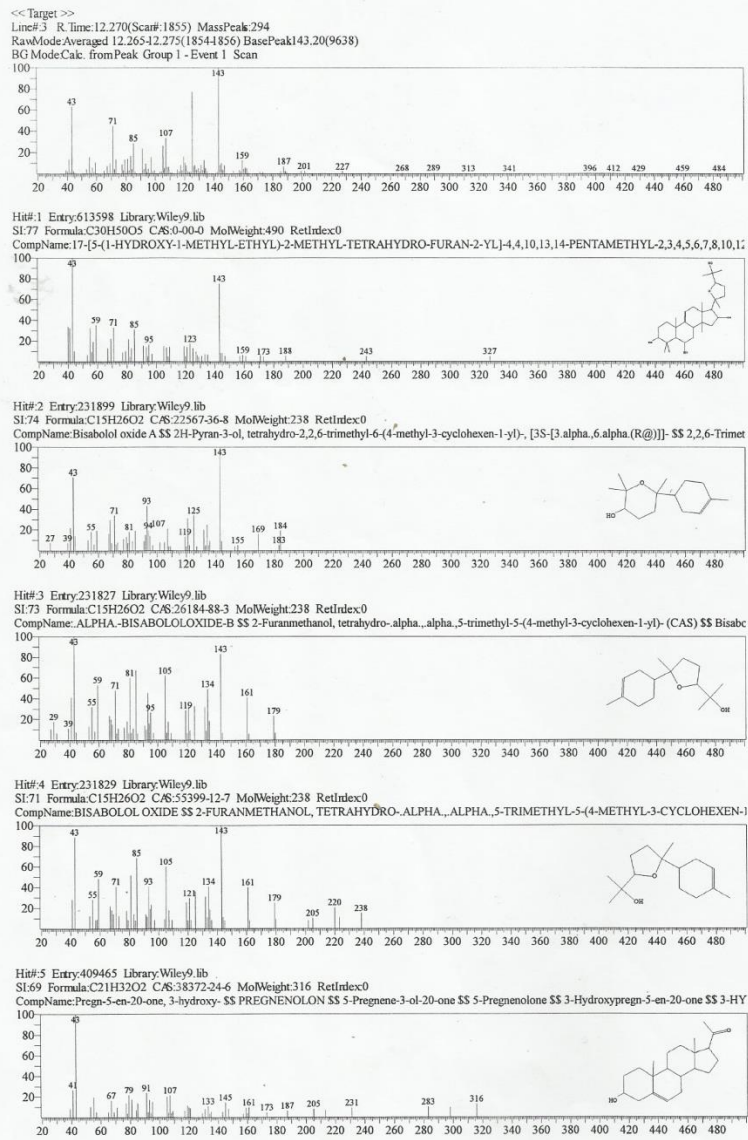
Hit#4 Entry:188936 Library:Wiley9.lib  
SI:73 Formula:C15H24O CAS:0-00-0 MoWeight:220 RetIndex:0  
CompName:Neoclovene oxide SS NEOCLOVENOXID



Hit#5 Entry:130437 Library:Wiley9.lib  
SI:72 Formula:C13H22O CAS:17283-81-7 MoWeight:194 RetIndex:0  
CompName:Dihydro- $\beta$ -ionone SS 2-Butanone, 4-(2,6,6-trimethyl-1-cyclohexen-1-yl)- (CAS) SS  $\beta$ -ionone, dihydro- SS 7,8-Dihydro- $\beta$ -ionone SS



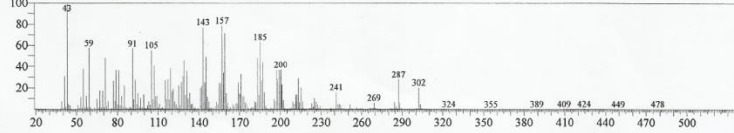
## Hasil Penelitian *Similarity Search* Berdasarkan *Database* Senyawa 3



## Hasil Penelitian *Similarity Search* Berdasarkan *Database* Senyawa 4

<<Target>>

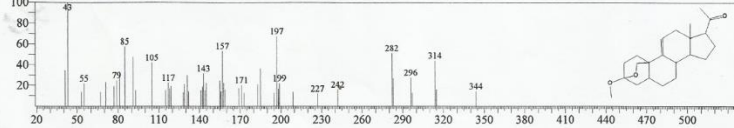
Line# 4 R. Time: 12.360 (Scan# 1873) MassPeak: 332  
RawMode: Averaged 12.355-12.365 (1872-1874) BasePeak: 43.05 (24862)  
BG Mode: Cak. from Peak Group 1 - Event 1 Scan



Hit# 1 Entry: 462166 Library: Wiley9.lib

SI: 68 Formula: C<sub>22</sub>H<sub>32</sub>O<sub>3</sub> CAS: 531439-20-1 MolWeight: 344 RetIndex: 0

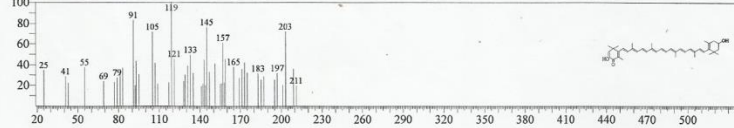
CompName: 18,3-Epoxypregn-9(11)-en-20-one, 3,β-methoxy-, (5,β)-  $\text{\$}$  18,3-Epoxypregn-9(11)-en-20-one, 3,β-methoxy-, (5,β)-  $\text{\$}$  18,3-EPOX



Hit# 2 Entry: 640761 Library: Wiley9.lib

SI: 66 Formula: C<sub>40</sub>H<sub>52</sub>O<sub>3</sub> CAS: 31460-54-5 MolWeight: 580 RetIndex: 0

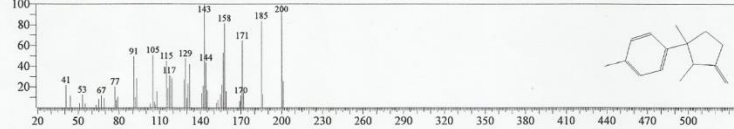
CompName: BETA-DORADECIN  $\text{\$}$  .beta.-Doradecin



Hit# 3 Entry: 143609 Library: Wiley9.lib

SI: 64 Formula: C<sub>15</sub>H<sub>20</sub> CAS: 5006-53-1 MolWeight: 200 RetIndex: 0

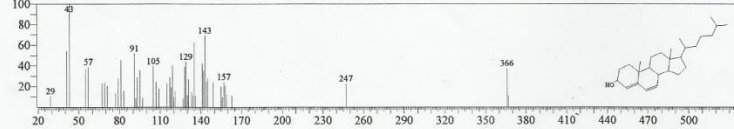
CompName: Benzene, 1-(1,2-dimethyl-3-methylenecyclopentyl)-4-methyl-, cis- (CAS)  $\text{\$}$  Laurene  $\text{\$}$  Toluene, p-(1,2-dimethyl-3-methylenecyclopentyl)-  $\text{\$}$



Hit# 4 Entry: 523295 Library: Wiley9.lib

SI: 64 Formula: C<sub>27</sub>H<sub>44</sub>O CAS: 14214-69-8 MolWeight: 384 RetIndex: 0

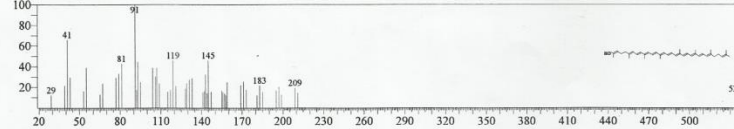
CompName: Cholesta-4,6-dien-3-ol, (3,β)- (CAS)  $\text{\$}$  4,6-Cholestadien-3,β-ol  $\text{\$}$  Cholesta-4,6-dien-3-ol  $\text{\$}$  Cholesta-4,6-dien-3-ol (computer-generate



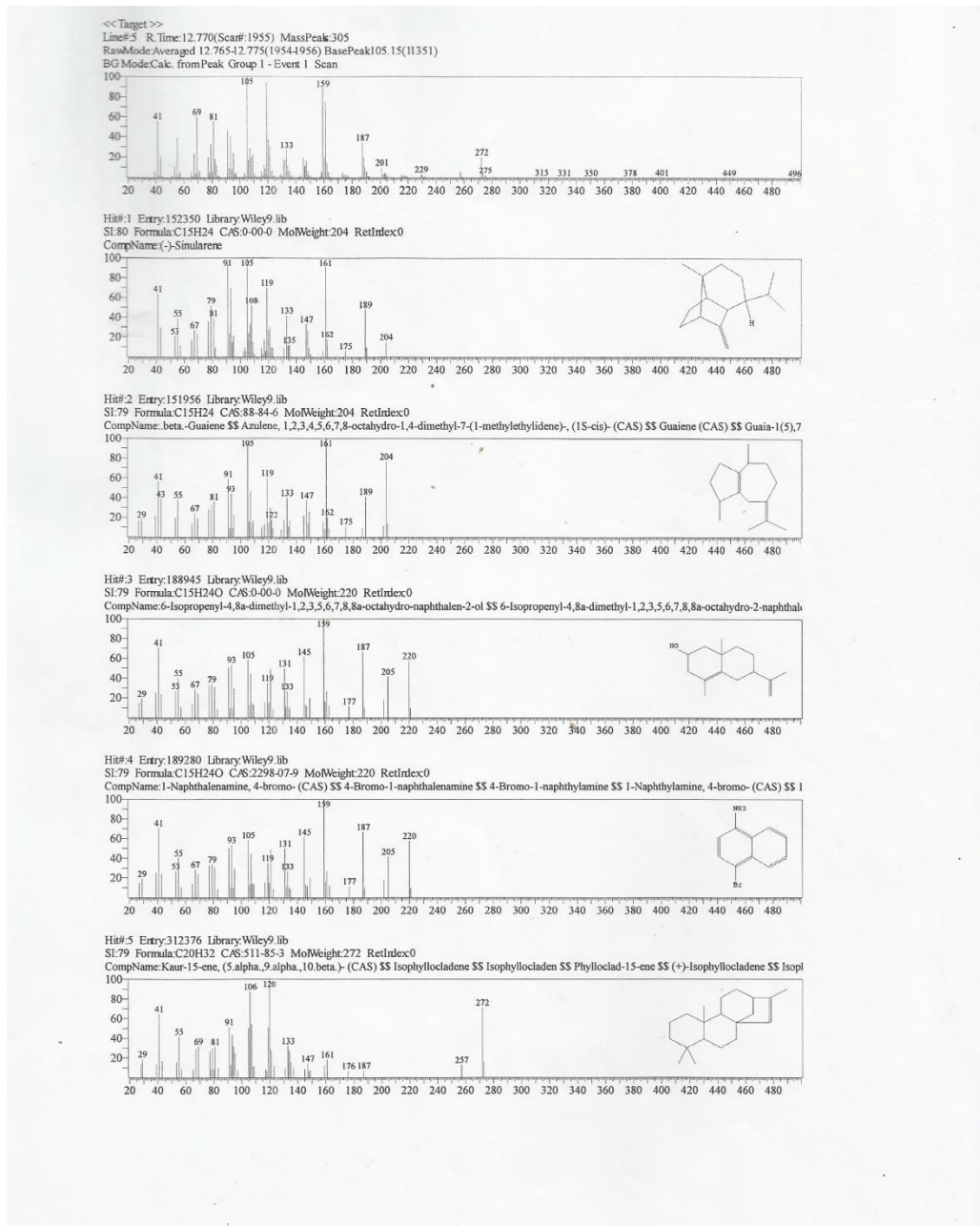
Hit# 5 Entry: 634726 Library: Wiley9.lib

SI: 63 Formula: C<sub>40</sub>H<sub>56</sub>O CAS: 19891-74-8 MolWeight: 552 RetIndex: 0

CompName: Lycopoxanthin  $\text{\$}$  .psi.,.psi.-Caroten-16-ol (CAS)  $\text{\$}$  Lycopon-16-ol  $\text{\$}$  Lycopoxanthin, all-trans-  $\text{\$}$  Lycopon-16-ol, all-trans-  $\text{\$}$  all-trans-Lycopoxanthi



## Hasil Penelitian *Similarity Search* Berdasarkan *Database* Senyawa 5





## Lampiran 4. Hasil spektroskopi NMR

