

CHAPTER IV

FINDING AND DISCUSSION

The Characterizations of George Falconer

Character is the person in the story, while characterization the way how the character reveals their characteristic, attitude, quality, and type of character-based dialogue and action,(Abrams, 1957). According to Burroway (1987:154), as cited in Koesnosoebro (1998: 112) as cited in Nia Gala (2018:45), there are two methods of character presentation namely, direct method and indirect method. The direct method is revealed through what viewers could see directly and literally, while the indirect method is we could see the characterization through four aspects such as, speech, action, appearance, and thought. Firstly, appearance can be revealed the assumption of facial features or body features because it is shown by one or two interactions, how to dress, attitude and the way they interact with other characters or objects. Secondly, speech or dialogue we could reveal the character thought dialogue by the choice of the word, pitch voice the tone of the voice. Thirdly, characterization can be revealed through action what the character does and how it influences to another character. The last is through the thought which is based on what the character hope, dream and thought the entire event or the story. From the data collection, it was found that there are 12 homosexual character and 9 main characters that present George as the whole character that what make a George a George Falconer.

George Falconer as an Observant Person

Table **Error! No text of specified style in document..**1 Sequence segmentation of George's observant character

No.	Sequence	Descriptive of Sequence	Character Explanation
-----	----------	-------------------------	-----------------------

1	1E	George characterization as an observant person showing when he takes a peek of the neighbor when he got caught, he shies about it.	. this characterization showing after he look at the neighbor child, that play in their yard, while Mrs. Strunk caught him observe them.
2	1F	George as observant person, as he notices Charley activity that always called him in the morning.	As observant person, George tend to be watch and observe his daily activity, which is could make him understand about what actually happen yesterday, that could be happen tomorrow and continually
3	1H	George as the observant person tries to look at the child who plays in yard while he drives.	This scene was taken by slow motion medium shot with eye level angel, panning right to track the movement of the car in the slow way. The observation of George relies on how scene try to convince the viewer about to see what George look at it.
4	2A	George as observant person, as he notices a couple of students, chain-smoking Lois and a boy.	The observation of is focusing on the slow motion of chain smoker ladies and one of his students named Kenny that waving hand when he looks at George
5	2B	George as observant person, as he notices a small gesture of secretary when she said she give his address to the one of student.	The observation of George shift to different approach here, not only rely on the slow motion but also on the change color and extreme close up perspective of camera, which is make lead him to different mood such as enjoy the observation or put interest about object that he observes. Because George as observant person
6	2D	George characterization as homosexual showing when he distracted by a half-naked tennis player while his colleague, Grant discuss about ignorance student, and nuclear war.	George characteristic as observant could be refer to his homosexual identity, while in his observation we could look the way camera shoot close up of half-naked student body smashing the ball with a slow motion that makes every single throb of the body noticeable
7	3C	George as Sensitive person because he meets the dog named India, in one ladies' car. he kisses that dog that reminds him of Jims	George observation shift to his memory of his dog, and then make some observation about what breed India is, from George observation we know three

		dog that never come back	thinks, he ever had the same kind breed of this dog
8	3D	George as responsible, polite person as he wanted to buys a new bottle of liquor and they talk to the Carlos after the bumped to each other	As the observant where he pay attention to the Carlos face could refer to the gay identity that is sexual fantasies or fetish entirely toward other men, in this scenes George look at Carlos striking face feature such as sharp jaw line, pointed nose and green eyes, bushy eyebrow
9	5A	George is polite person because he asks the bartender for scotch politely	We could see blooming color filter of the scene that indicate excitement of interest of George to the something , as Kenny enter the café the color start to change and George try to look at the Kenny precisely while he drink his scotch because he know Kenny put the interest on him by stated
10	6C	George as observant person as he pays attention to the Kenny that seduces Him by strip off his wet clothes, but does nothing.	As the homosexual person, George still keep his moral value, by not try to make another scandal. While Kenny strips off his clothes George as homosexual with moral value does nothing but observe Kenny strip sis clothes.
frequency	10 sequence.		



Figure Error! No text of specified style in document..1 George observing his neighbor.

As the observant person George take a look of every single detail of the event, which is he takes a look to their neighbor, in George vision we could see some event that happens in

the nuclear family just like one of neighbor daughter play with a hammer, and the other one that taken with a close-up shot is a little bit abusive by crushing a butterfly, and the son is searching for metal with a metal detector, all that even that George look in every single detail that indicates they observe what happened in the nuclear family that cannot be happen for himself because he is homosexual and lonely. Besides about loneliness, Isay (2006) stated one of his patient, Gerald, did not feel satisfied having sex with a stranger and always spend his time work with their friend, even though their relationship with their partner end and did not work at all, he feels jealous about their friend sexual adventure and relationship. From this, it could find the pattern of jealousy or feel lonely because of the relationship that did not work or end well. However, Isay (2009) stated on of his patient, Alanis the masculine guy who felt lonely in their relationship, lonely because he feels dissatisfied with their relationship, but after few months of break up, he felt stress and more lonely than he is before and stated how hard he makes the relationship in the gay community. From this, I could find loneliness in the gay community not because they do not have a mate or boyfriend, it's more because a relationship that does not work at all. Moreover, in Robinson (2013) that has been interviewed very gay men from all classes that include gay men that decade before 1970, that gay men who live their live monogamous or serially monogamous not always have a lonely life. From all the interviews of gay men, I conclude George's loneliness, not because of that relationship that does not work but it is about the loss of someone that he loves



Charlotte, nobody else calls me
before eight in the morning.

Figure Error! No text of specified style in document..2 George observant character showing while charley call him

As an observant person, George tends to be watch and observe his daily activity, which is could make him understand what happened yesterday, which could happen tomorrow and continually. Which is why George knows Charley the only one person that called him in the morning. These scenes started with low angle medium shoot that to show George walk in the struggle with his pant down. Transition this scene so fast, with an eye-level medium shoot, that captures a tired expression of George because Charley calls. And there is once dialogue that indicates George pay attention as one of his characterization that indicates, he observes Charley activity that calls him in the morning.

George (in): *Hello, Charley.*

Charley (in): *How did you know it was me?*

Charley (in): *Charlotte, nobody else calls me before eight in the morning.*

This indicates how George pays attention to her, and at the end of the conversation, we could see the scene that taken with a medium shot eye-level camera, Charley smile because he accepts her invitation. It has an indication Charley still put her interest in George. as a friend or as a lover. Because in the next scenes we find out she still in love with George. Dawson (2014) stated friend or close friend is the perfect place for coming out. And usually coming out to the close friend that knows about you. And it will be hard to come out for someone that puts interest in you. Form this case we could see there are two things that George face it, first there is Charley as a supportive friend that knows about George for the long time, and two, Charley as the person who put interest in George.



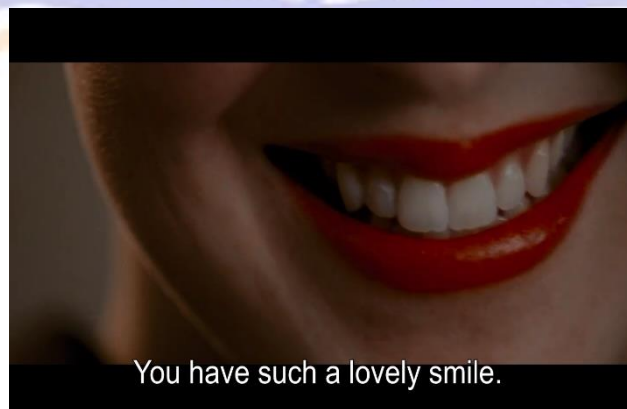
Figure Error! No text of specified style in document..3George observant character while looking at neighbor child

This scene was taken by slow motion medium shot with an eye-level angle, panning right to track the movement of the car slowly. The observation of George relies on how the scene trying to convince the viewer to see what George looks at it. For the example of this scene when George look at the child and mimicking shot gesture, they try to make sure every single detail shoot in slow motion. That could make the vision of George that pay every single detail of the event that occurs. The scene was very slow with scoring from Abel Korzeniowski who also compose scoring from tom ford future project that is A nocturnal animal. speaking of the neighbor, we could find how this movie does not try to create a dilemma between George and his neighbor just to focus on a suicide attempt. It's because in the real novel, in suburban live style according to Carr (2016) George's behavior is not acceptable, because he lives with his boyfriend Jim. And use the term “the unspeakable”, and how Jim in the novel tries to create a faux situation that Jim is fine because he chooses to preserve the memory of Jim. That could be the more reason why George always has stiff behavior and could add some dimension of the story.



Figure Error! No text of specified style in document..4 George vision while he observes his student

The observation is focusing on the slow motion of chain smoker ladies and one of his students named Kenny that waving hand when he looks at George, the reaction from that observation is George wave back to the Kenny. And also give polite characterization to him as a lecturer. This scene was taken with a medium-long shot with tracking forward to follow George step. where George walking against the stream of the student. From this scene, we know the background of George. George is a lecturer and there is one hidden message behind George's walk against student stream which is that indicates how different he is to straight people. from the attire, we could see how George attire is more formal than any other people on campus, the nice shewing black suit that fit his tall body it gives a professional look to him. From this sequence, there are only three characterizations is showing, there is dandy, polite, and observant that no one to lead to homosexual characterization.



You have such a lovely smile.

Figure Error! No text of specified style in document..5 George vision while look at secretary lips.

The observation of George shift to different approach here, not only rely on the slow motion but also on the change color and extreme close up perspective of camera, which is make lead him to different mood such as enjoy the observation or put interest about object that he observes. Because George as observant person, as he notices a small gesture of secretary when she said she give his address to the one of student. The observation of George not only from his view but also what he smells, from that scene, he makes an expression to inhale something which is he pay attention to the smell, and know precisely what perfume that secretary used and he said

“Arpège?”



- Arpège?
- Sir?

Figure Error! No text of specified style in document..6 George mention perfume that secretaries use.

It was the one of most popular Lanvin perfume created in 1927. The shoot was taken medium close up, with slightly change the filter of the film to be warmer, this could give what George feel, and appreciate to the audience. Thompson (2009) make a research about color in A single man movie which is she stated how the change of the filter could give us perception of what George feel, that could give a strong emotion about what they want to see.



Figure Error! No text of specified style in document..7 George vision while he looks at a male torso

George characteristic as observant could be refer to his homosexual identity, while in his observation we could look the way camera shoot close up of half-naked student body smashing the ball with a slow motion that makes every single throb of the body noticeable. The orange filter makes the color of the scene changes and the sweat glistening over the body that is crate the intense observation of George. This scene was taken close up eye shoot level to capture all the detail that George pay attention with. this could be how contrast George is. Thompson (2009) stated perspective in the house which is dominate with cold color just like olive, grey, brown to the something warmer in the outside when he interacts with someone. Because George raises his awareness and learn to care for someone. This scene even concludes about how men or the gay person could be attracting to the male body, gain attention and pleasure form it, as Drunkman (1995) stated which is cited by Gokcem (2012) how homosexual could be the one who make or bring the look that could be satisfied themselves. Gockem (2012).



Figure Error! No text of specified style in document..8 George Vision while he looks at Carlos

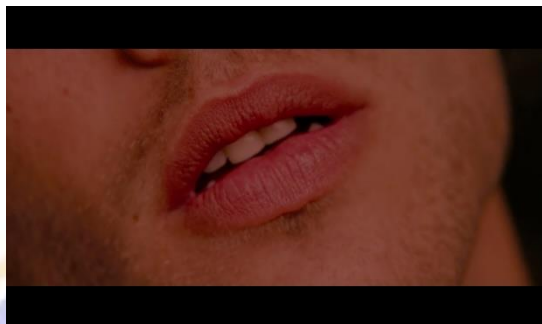


Figure Error! No text of specified style in document..9 George Vision while he looks at Carlos

As the observant where he pay attention to the Carlos face could refer to the gay identity that is sexual fantasies or fetish entirely toward other men, in this scenes George look at Carlos striking face feature such as sharp jaw line, pointed nose and green eyes, bushy eyebrow, not only pay attention, the change of the filter in the movie could be the indicate of how much George interested in Carlos as the gay man and observant. From this sequence of event, after Carlos speak in foreign language, George reply it with a same language as Carlos use that indicate George is bilingual's person. And when he went to the cars, inattentive characterization reveled after he look at the sky and admire that beautiful red sky that make him hold the conversation with Carlos longer. Thompson (2009) in the close-up scene, cinematography tends to be more glamorizing some feature of the body more prominent in case they want to show something significant on the movie. And the frequency of George attention to the lips and eye that signified George attention to the detail. Moreover Gokcem (2012) stated how the eyes and lips of Carlos as Spanish hustler is the main point of attraction that giving a living proof, men can be attracted to the men, in addition to make better impression of the movie, how slow motion in the movie with the same method giving the different experience to

George feeling such as slow motion to feel agony of rejection , and happiness because they use the different color of filter that could change the meaning of George feeling instantly.



Figure Error! No text of specified style in document..10 George look at the dog

George observation shift to his memory of his dog, and then make some observation about what breed India is, from George observation we know three thinks, he ever had the same kind breed of this dog *“I used to have smooth fox terriers”* and he know how rare is dog is *“You don't see them very often”* and the smell of the dog *“The very smell of buttered toast.”* from his conversation with the ladies.

In this scene create the intimacy George with the dog that could create memory of his dog. The shot was taken with closeup eye level shoot when he smells the dog, the scene was in the slow motion to capture all the agony, and sensitive feeling of George, and the scene moving to the extreme close up, zooming and tilt up 30 percent to catch all George expression when he kissed the dog with scoring of Abel Korzeniowski. In addition of observation effect Thompson (2009) stated how the dog could be one of significant element in the movie, because he put prominent color such as red as element of blood in the dog, that could be stand out with white and any other cold tones.

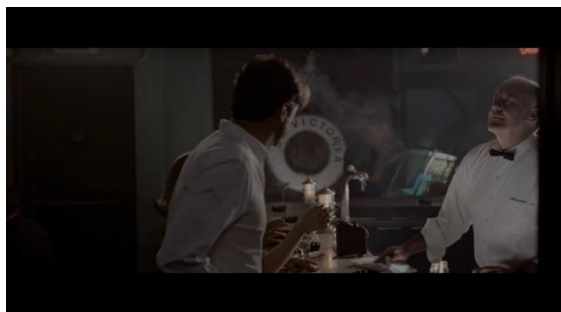


Figure 4.Error! No text of specified style in document..**11 George vision change when Kenny come to the room.**



Figure 4.Error! No text of specified style in document..**12 George vision change when Kenny come to the room.**

From the scene at the minute 01:13:38 we could see blooming color filter of the scene that indicate excitement of interest of George to the something , as Kenny enter the café the color start to change and George try to look at the Kenny precisely while he drink his scotch because he know Kenny put the interest on him by stated. Gokcem (2012) stated how the eyes and lips of Carlos as Spanish hustler is the main point of attraction that giving a living proof, men can be attracted to the men, in addition to make better impression of the movie, how slow motion in the movie with the same method giving the different experience to George feeling such as slow motion to feel agony of rejection, and happiness because they use the different color of filter that could change the meaning of George feeling instantly, and moreover King (2014) stated the meeting Kenny at the bar indicate how positive , vivid , and exciting George about Kenny presence, and after some philosophical conversation and random activity, George

feel he does not want to die anymore, because he have a reasons to live that is could be applied on George meet with Carlos experience as well.



Figure 4.Error! No text of specified style in document..13 **George observe Kenny undresses his clothes**

As the homosexual person, George still keep his moral value, by not try to make another scandal. While Kenny strips off his clothes George as homosexual with moral value does nothing but observe Kenny strip sis clothes. This indicate how the homosexual trait still apply in this scene such as cruising and interested to the naked male body and how open Kenny in the time when homosexual considered taboo. Gokcem (2014) stated in the scene where Kenny strip his clothes but the way he looks Kenny that indicate gay could be see a thing from different way. As what Clum (1992) stated that cited by Gockem (2014) how male naked body is the male could be one of the homosexual pleasures and become the common thing in gay theater. Moreover, as Steven (2014) stated Tom ford as the director of the movie try to related Kenny characteristic as the cruising in the modern way, which is they will stripped themselves and decided to have one night stand , and stated how Isherwood recall the postwar are that suggesting naked body to promise about have sex in that time, that contrast to digital era, when you could use an application to get know the availability of cruising that could be the one thing , the homosexual still have their visibility from their own kind. According warren (1974) that cited by Taub (2010) stated how cruising or gay encounter for sex, and consider the as

hedonistic activity in gay community that involved sex without emotional commitment which is that can find in big city and usually in public spaces where the gay community can interact to each other restroom, park, beach, gay x rated theater. In another research about gay social activity such as cruising, according to Humpreys (1970) that cited by Recee (2003) how cruising for sex in out boundaries ethical professional on the campus, because how the campus become the field of cruising for gay encounter for sexual meeting. However, that public spaces are not the place for meet but it could be use as sexual interaction that occur the risk of the health issue, and spreading HIV and Aids in campus. In addition, Churchill (1971) in his book covered the issue about how the homosexual in large city tend to be more open about sexual encounter, and used adopted name such as Midnight Mae to cruise in midnight in public park. Moreover, according to Mercer (2017) after pre digital download, there are website that offering public spaces to meet for sex, and the area is getting wider every year. In addition, in such of pornography aspect, cruising could be theme of gay porn movie that influence few studios to make movie about older male cruise to find you boys for sex.

George Falconer as a Polite Person

Table **Error! No text of specified style in document.**2 Sequence segmentation of polite character of George's characterization

No	Sequence	Description of Sequence	Character Explanation
1	1C	George Characterization as polite person is showing after he got a news from Jim family about Jim accident.	After receive some rejection from Jim family, with still in remorse position, and anger it does not stop him to be polite to Jim family
2	1G	George as a polite and person who loved to hug the Alva the cleaning ladies, and	George still manage appreciate someone in their life such as Ava, the house keeper, who forget to put out the bread from the

		say thank you to her for her effort.	refrigerator. He still appreciates what Ava have done and said thank you and kiss her cheek before he leaves to work
3	2F	George as Polite person as he keeps in cools to face Kenny curiosity after the class dismissed.	After the class dismissed, Kenny asked about something-that inappropriate to George such as drug he used, and many more, but George still manage that question politely.
4	3E	George as observant person when he pays attention to the conversation with Carlos.	This scene show how gentlemen George is by does not want anything from Carlos but well-mannered person who loss his will to live
5	2D	George characterization as homosexual showing when he distracted by a half-naked tennis player while his colleague, Grant discuss about ignorance student, and nuclear war.	This sequence not only shows his homosexual and cynical characterization of George but also showing his politeness to his friend He greets good morning to the one of his colleagues and reply Grant greeting by good morning. That's mean he keep his gesture and attitude in the same way and it could be the commons sense
6	3A	George as homosexual person as he goes to the bank to takes some of his goods, including the picture of his ex-Jim.	When George entering the bank, the teller greets him with his name that indicate she already know who he is, and often go to the bank, and he asked about teller days, that's become a symbol of appreciation to the worker.
7	3D	George as responsible, polite person as he wanted to buys a new bottle of liquor and they talk to the Carlos after the bumped to each other.	This shows how well-mannered George, no matter who he interacts with.
Frequency		7 Sequence	



Figure 4. Error! No text of specified style in document..14 **George still say thank you after getting rejection from Jim families**

After receive some rejection from Jim family, with still in remorse position, and anger it does not stop him to be polite to Jim family. We could see from his dialogue after got rejection from Jim family.

*“Mr. Ackerley (in): In fact, they don't that I'm calling you now
George (in): Thank you”*

The shot was taken in living room, eye level extreme close up shot, which is we can find the pure expression of sorrow from George that indicate how sad he is to hear the news about his boyfriend passed away. The living room was very comfortable with dominant soft brown color, and raining outside. George closed the call, takes a deep breath and his expression feel the pain. From this scene that conclude George want to be civilized as he should be, because educational background influence him to behave that way. And we know Mr. Ackerley is the only one from Jim family who still have a common sense by tell him about Jim accident. But in addition of try to emphasize the feel of rejection from people, “just for family” things are just only available on the movie, which is, in the novel we could find not Mr. Ackerley which is Jim cousin who called George, but Jim uncle who invite him to the funeral. As stated in Isherwood (1978), Jim uncle come to tell him about funeral and George has right to honorary sacred family grief but decline it. In addition, Thomson (2009) stated how Tom ford as a

director try to emphasize the exclusion effect to the movie by adding the “family only” factor to the movie. And from the character revelation, that conclude George is calm person based on the way he handles the news, he is polite person because he still says thank you to the Mr. Ackerley after the end of conversation, and indirectly homosexual person after Mr. Ackerley stated about George Boyfriend .which is we could see there is two characterization of George that can't be relate to the homosexual tendency based on Richard Isay.



Figure 4.Error! No text of specified style in document..15 **George Hugs ava, his home assistant**

After all unfortunate event series in his life, George still manage appreciate someone in their life such as Ava, the house keeper, who forget to put out the bread from the refrigerator. He still appreciates what Ava have done and said thank you and kiss her cheek before he leaves to work. The scene was taken by medium shot eye level with George 1,5 meter near Alva, his stiff personality does not stop him to give her cold kiss and be grateful about Alva. And the existence of Alva in this film is try to bring George personality after Jim dead, which is want to emphasize psychological view of George that feel empty after his loss. And also, to show he still in the grief of someone, and become emotionless. Moreover Bronsky (2011:02) stated the film is capture how psychological of George in his environment and deal with it with his memory and dramatic interaction with people that make the film interesting. From this character revelation, there is no homosexual characterization that revealed.



Figure 4. Error! No text of specified style in document..16 Kenny confront George about mescaline

As the professionalism between student and teacher, the way Kenny approach George is considered inappropriate, because he asked some personal thing such as what drug he used.

“George (in) *Have you ever tried mescaline?*”

With that kind of attitude, George has a reason to angry at him, but he could control it by just raised his voices to create disagreement about that conversation but still in the mild tone, because he does not use harsh word.

“George (in): *Kenny, have you been listening to me? I shaved off my eyebrow.*”

That refer to the experience that George had, after tried few mescaline. In addition, we could find how mescaline has a few connections with George view that stated of Huxley (1954) that cited by Thompson about his experience in mescaline in two books, that is *the door of perception* (1954) and *Heaven and Hell* (1956).

Like the flowers [my books] glowed, when I looked at them, with brighter color, a profounder significance. Red books, like rubies; emerald books; books bound in white jade; books of agate; of aquamarine, of yellow topaz; lapis lazuli books whose color was so intense, so intrinsically meaningful, that they seemed to be on the point of leaving the shelves to thrust themselves more insistently on my attention. Huxley (1954:53)

In addition, Thompson (2009) stated how Tom Ford allegedly using the vision of mescaline to enhance the aesthetics vision in the movie that could be used as the George Falconer Sense while interact with his environment.



Figure 4. Error! No text of specified style in document..17 **George learn about Carlos Background**

After pass him money, Carlos assume George need his company but he refuse it and then they talk for while about Carlos background , and the scenes turn red to show how Carlos as a stranger could give him a color that is not only because he interested but also could give him inspiration to stay alive. This scene show how gentlemen George is by does not want anything from Carlos but well-mannered person who loss his will to live. And the shot was taken with medium long shoot with eye level to capture to capture George and Carlos vie that see vivid pink color of the sky. This scene to show how lonely George is, he needs somebody that listen to him, or just listen someone talk. Even is just only small conversation with Carlos that brink some reasons to live, because thy tend to uses vivid color in that scenes that indicate he feel excited about that interaction. In addition, Thompson (2009) stated perspective in the house which is dominate with cold color just like olive, grey, brown to the something warmer in the outside when he interacts with someone. Because George raises his awareness and learn to care for someone.



Figure 4. Error! No text of specified style in document..18 **George Greeting his friend**

He greets good morning to the one of his colleagues and reply Grant greeting by good morning. That's mean he keep his gesture and attitude in the same way and it could be the commons sense to the person said good morning to somebody they know, and George is the one who still has manner to keep his polite manner. As we could see the way George Talk little bit cynical about student that revealed how cynical he is. In other hand after the conversation, refer to the movie George characterization reveled again as inattentive after he easily to distracted of half-naked tennis player, and pay attention a lot to them, that also revealed how observant he is to the something that he interested and also homosexual characterization that is interested to the male body. From that sequence that conclude there is four characterization of George falconer, that is polite, observant, inattentive, cynical, and homosexual, and four of them that is no related to homosexual characterization.



Figure 4. Error! No text of specified style in document..19 George asking about day, from one of the receptionists in bank.

When George entering the bank, the teller greet him with his name that indicate she already know who he is, and often go to the bank, and he asked about teller days , that's become a symbol of appreciation to the worker or I could say George know etiquette how to interact with worker. From this scene it could see there is no homosexual attitude that George shows to the audience that make that characterization cannot be related to the homosexual characterization.



Figure 4. Error! No text of specified style in document..20 George say sorry to Carlos

After he bumped Carlos, he insists it his fault for that broken bottle and he insist him to buy another pack of cigarette, and he said sorry to the cashier about broken bottle. This scene indicate how well manner he is no matter what kind of person he interacts with and it could be common sense of him to say sorry and reliable person to buy another pack for Carlos.

George Falconer as an Emotional Person

Table **Error! No text of specified style in document..3** Sequence segmentation of George's emotional character

No	Sequence	Description of Sequence	Character Explanation

1	1D	(flashback) The depression and sadness of George make him breaking down to the Charley home.	Not only sad because loss love of his life, he may feel rejection, insecure, and hate from society, he does not know what supposed to do. And last resort is he cries to someone that close to him and that is Charley. In this case we know Charley is the only one person that care about him
2	2F	George as Polite person as he keeps in cools to face Kenny curiosity after the class dismissed.	Drug and alcohol content are not the legal conversation between student and their lecturer, and that is why George seems to raise his voice to end that conversation.
3	3C	George as Sensitive person because he meets the dog named India, in one ladies' car. he kisses that dog that reminds him of Jim's dog that never come back	George kisses the dog and all the memory flood her mind about his dog. It's indicated George still has emotional feeling about the dog
4	4C	George as emotional person as the situation heating up when he Argue about Charley relationship without	As the person who still grieving about the loss of boyfriend that could be harsh to bring the sensitive issue to the table such as what Charley did, that consider what

		thinking about her feeling.	Charley did as substitute relationship.
Frequency	4 Sequence		



Figure 4. Error! No text of specified style in document..21 **Charley hug George**

Not only sad because loss love of his life, he may feel rejection, insecure, and hate from society, he does not know what supposed to do. And last resort is he cries to someone that close to him and that is Charley. In this case we know Charley is the only one person that care about him and love him unconditionally. We could hear only one scoring sound in that scene that is rain sound and clean white environment. The white marble look glistening in front of house with golden ring bell knob, look so minimalist yet modern. George tries pushing door bell and knocking the door of charley house. the scenes start from minute 00:07:41;07, where the shot taken with eye level medium close up shot with still image, when George read a book, the scene has brown, ivory, black, white, grey color dominant with lighting on the center to focus on the image of George. after he received call from Jim cousins Mr. Eckerley, the scene changes to when George take off and hold tight his glasses that indicate he is one emotional state right now, after Jim cousin telling about Jim accident. then move to the eye level super close up shot that showing side profile face of George, to catchall the reaction of George, just like Mouth trembling, and move to the eye level super close up shoot to that close up until 30 percent to see George eyes start glistening that indicate he is going to cry. And the top of its

George emotional state started when he run way went to Charley house, the scene was taken very fast, when George run the shot was taken with eye level medium shot with random track motion to enhance the emotional state of George that cannot hold any more about Jim car accident. He rang the bell few times and Charley open the door, hand high him while George still cry. In addition of George emotional state when he got the news about Jim accident Bryant (2010) stated about how ford keeping super close up to gain more expression of George when he heard the news about car accident, with following of humiliation cannot going to Jim funeral just enough to break and make fall George heart. And this has correlation with the rejection, because homosexual tend to gain rejection from family and society, just as Richard (2009) stated some of homosexual people gain a rejection from the family, which is lead to one of the gay identities that is Have/fear/feel rejection of family or society. According to Isay (2009) Gay can't express them as heterosexual do, because they have social pressure. Such in the young age gay people tend to be more private about their life because somehow in their childhood they gain some rejection from their peer and considered that something wrong with them. In addition, since 2005, family rejection because sexual orientation may lead to the suicide according to the Institute of Medicine of National Academy that cited D'Augelli (2005). Same as Ryan that cited by the Institute of Medicine of National Academy (2010) study about 224 teenagers in 21-25 found has highest suicide rate because rejection from the family. Moreover Black (2013) stated how tom ford want to show the audience about the emotional states of George to learn of his boyfriend death, how the emotion could give crush effect to George mentality and give them shock value at the same time. And use rain and flood as the supplement to emphasize the feeling of George without any word which is can be presented by the action that refer to the movie, that could give the silence grief effect to the audience.



Figure 4.Error! No text of specified style in document..22 **George Got emotional when Kenny confront him.**

Drug and alcohol content are not the legal conversation between student and their lecturer, and that is why George seems to raise his voice to end that conversation. The scene starts in minute 00:25:57;01 while Kenny following George out from the class with eye level medium long shoot camera. The campus wall building looks so stiff, with coating of brown ceramic, and the floor reflects shine naturally from sunshine outside the building. George's position is in the middle of an alley with a suit that perfectly matches his figure, which is the same color as the wall. The conversation leads to George's experience of mescaline, which is an uncomfortable topic that he asks about in his lecture. And in the end of the conversation, Kenny buys him a pencil sharpener that George picks is the yellow one, but Kenny thought he would choose blue. From all the conversation, we know Kenny and George have the same interest, while Kenny is the student with full curiosity, George is the person who is very personal, that's why this kind of topic is not the topic that they should not talk about. And show how the color could relate to the topic, such as color blue as religious, color red as lustful or anger, that because in the movie itself the color has a significant role to show past and present, sad and happy just like George's interaction. Moreover, Thompson (2009) stated how each character in a single man also has their own color, just like Charley and their chromatic pink color and all her appearance is inspired by Bebe Paley and concerns about how the placing or setting hue color of the brand make them as a model and to create a branded object. Moreover, Steven (2014)

has stated how the interaction of George to another male character it showing the contrast different homosexual live their life, while George worries about his visibility, while Jim and Kenny feel comfortable with their identity life, and even Carlos who live their life in it.



Figure 4. Error! No text of specified style in document..23 **George kiss the dog**

The scenes have a sepia color at the first scenes, starting at. George arrives to the liquor store and notice a dog bark. There is smooth fox terrier dog inside black Bentley s2 continental car bark at George, with, interior inside the car is leather seat with open window prevent dog from dehydration and breath freely. But the color changes into blooming red filter and become warm when George kisses the dog and all the memory flood her mind about his dog. It's indicated George still has emotional feeling about the dog, from that narration of scenes we can see how the dog could give George excitement to live same as when they interact or see someone that make the color change to be warmer than before.



Figure 4.Error! No text of specified style in document..24 **George lost control**

As the person who still grieving about the loss of boyfriend that could be harsh to bring the sensitive issue to the table such as what Charley did. George and Charley start dancing and enjoy the music together, really often George smiles and enjoy their companion with charley. And take a rest for a while. In this scene it shows how intimate charley and George is as platonic relationship, they just like complete each other. But one thing that charley doesn't understand is how much George love Jim, and assume that relationship just as substitute.

Charley (in): Geo, let's be honest, what you and Jim had together was wonderful but...

Charley (in): wasn't it really just a substitute for something else?

And charley attitude makes George as the person who still in remorse feel sad, angry, betrayed by the only one person that close to him and bring all of her past to insult charley about how nasty her life is.

George (in): And by the way, what is so real about your relationship with Richard?

George (in): He left you after nine years!

George (in): Jim and I were together for sixteen years!

After all the confrontation they realized they have same fate, love and loss but still complete each other. This scene showing how much Charley love George as the friend or one-sided love, in this one of the scenes we could see how charley hug George passionately that seem like she does not know or does not care George preference. As the socialization function, coming out to the other is the term of self-labeling, recognizing him, not deny about sexual orientation to the other person or society. that needed if the homosexual people need to overcome their feeling and mutual loving such as relationship with sexual or non-sexual involvement, Isay (2009). In addition, the term of coming out is from olden days. Where all the aristocrat using that term as where the young society debut in parade with dresses before

first world war that referring come out into the society. Moreover, today they use that slang coming out refer to “move”, or recognize him as a queer identity. Dawson (2014). According to Isay (2009) , coming out is the one of homo-socialization aspect that make the homosexual people has their own development , to socialize, that could be positive trait for them, however it could be limited by society, geography, vocation, viability, which is some of gay people does not have or must not to come out because that factor, from George Falconer example we could see Charley is the one from few people that George coming out with because the society in that time consider gay as taboo. Moreover King (2013) share her view about the concept of “fag hag” that Charley live in it, is the one of reflection how it could damage relationship because feeling attachment in “fag-hag” relationship that could damage the relationship because launches some heteronormative lament about heterosexual relationship that put into homosexual one. And one thing for sure heteronormative that Charley stated has little bit homophobic tendency that make a connotation heterosexual still superior.

George Falconer as a Dandy Person

Table **Error! No text of specified style in document.**4 Sequence segmentation of dandy character of George’s characterization

No	Sequence	Description of Sequence	Character Explanation
1	1b	George characterization as a tidy person showing when he prepared to work and all of his property look so neat.	As tidy person that could relate to their job, George seem apply all the thing in organize way, just like cabinet, all the grooming stuff, and the way how he prepares that reflect the perfection and pay a lot of attention to the appearance.
2	2b	George as observant person, as he notices a small gesture of secretary when she said she give his	As the dandy person, no wonder George instantly get to know some of grooming stuff just like perfume, and that scenes show how excited he is

		address to the one of student.	after he exhale smell of the perfume that he already knows.
Frequency		2	Sequence

Tom Ford as the fashion designer and movie director try to give his influences to the movie, it shows by how well dressed some of the character refer to the 1960 style. As Black (2013) stated how Tom Ford try to put himself into the movie, try to recreate 1960 style that close to the book. That's why he recruited some expert just like Dan Bishop, the production designer of *Mad Men*'s because he known for his attention to period detail, just like walnut cupboard, old car, attention to the lens detail and even Jon Hamm's (Don Draper) voice that informs George over the phone of the death of Jim.

And no wonder all the kind of fashion detail is fused to the character itself just like George and their detail of fashion. At the beginning of the movie, Tom ford as director try to show us how hygiene, neat, tidy George is by giving sequence of activity how George becoming A George in the morning.



Figure 4.Error! No text of specified style in document..25 **how clean, hygiene and seriously he is to take care of himself**



Figure 4.Error! No text of specified style in document..**26 how clean, hygiene and seriously he is to take care of himself**

It started by shaving his moustache that indicate he is hygienic person, preparing his clothes which is have seal that indicate he is tidy, polishing his shoes, and check out himself in front of mirror which is indicate he pay attention to every detail to start his morning. All of his activity to started new day. The shoot was taken with extra close up to pay every detail of George activity. could be related to the one of Richard Isay gay identity which is related to have more aesthetic interest. But it does not mean all gay have their aesthetic interest, because we could find that characterization in heterosexual person too.

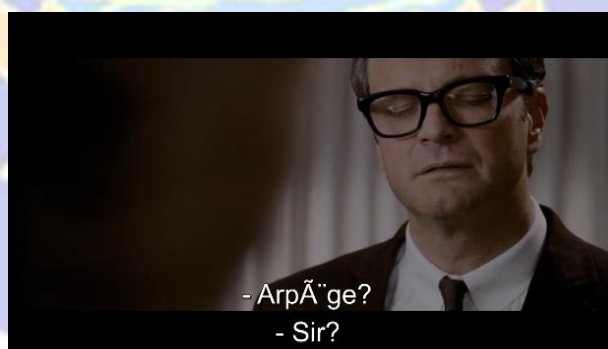


Figure 4.Error! No text of specified style in document..**27 George try to guess the brand of perfume**

In another scene where George Pay attention to the perfume that secretary use that's indicate he is observant, have an aesthetic sense, and dandy.

George Falconer as a Suicidal Person

Table **Error! No text of specified style in document..5** Sequence segmentation of George's suicidal character

No	Sequence	Description of Sequence	Character Explanation
1	2H	George as Polite person as he keeps polite to refuse Kenny invitation.	After back from his office, and enter the car, there is scene when George want to open his briefcase and has an indication he wants to suicide inside the car, but the action was stopped by Kenny who want to invite him to the bar, but he refuses it politely.
2	3H	George as suicidal as he back home with depressed and pull out the gun, and ready to commit suicide	George is tidy person, he would to make his suicide as perfect as possible, he prepares some position that he would like to use when he commits suicide.
3	4E	George as suicidal person as he made preparation for his suicide	George as desperate man try using gun once again after comeback from charley's dinner but he remembers one thing, and canceled his plan to go a cafe when he and Jim met for the first time.
Frequency		3 Sequence	

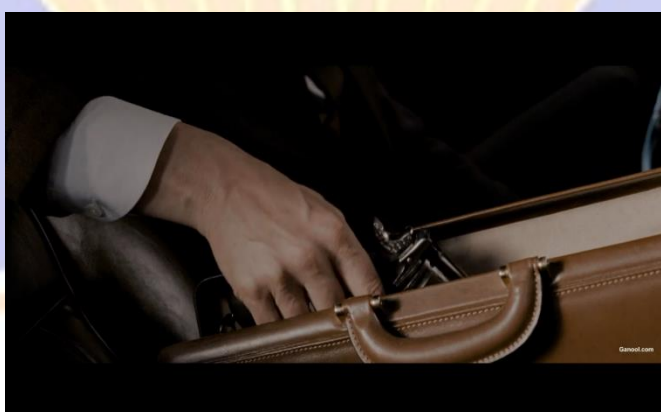


Figure 4. **Error! No text of specified style in document..28** George try to put his gun to the case

The glimpse of the scene from 00:32:40:00 that indicate George try to pull his gun could indicate him to commit suicide in the car, but luckily Kenny knock his Car door and George cancel his plan to suicide in the car. George seem nervous about that situation, that shows from his facial expression and the dialogue that tend to be more fast than usual he talks, that's mean he hiding something, that is a gun that he pulls back before Kenny see it. in this scene it could see another George Characterization such as polite, when he refuses Kenny offer to go to bar, to take a few drinks. It could see little bit cynical characterization from George from the way he interacts with Kenny.

“Kenny : Are you going somewhere, sir?.

George : That is usually why people get into their cars.”

This dialogue seems cynical that to tell Kenny, he already knows George will going somewhere, that's why I get into the car.

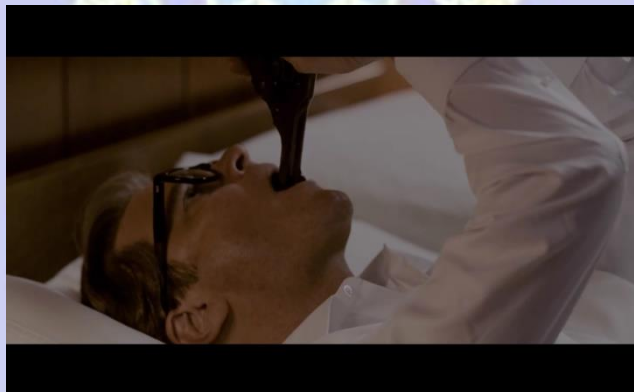


Figure 4.Error! No text of specified style in document.**29 George want to commit suicide**

After he remember his life with Jim, George prepare his second suicide attempt, first of all we could see another Jim characterization such as tidy person, when he prepared all his good just like key, important letter, suit, shoes, that he arranges over the table. after that he come to the bed and try few positions, and place and decided to find another way, such as lock himself in the sleeping bad and also failed. Another characterization that show in this sequence

is how care he is with his household assistance that he put some money as the severance pay, that's mean he still has a will to end his life.



Figure 4.Error! No text of specified style in document..30 **George want to put the trigger.**

After comeback from Charley's dinner, the glimpse of red moon it's that started a new sequence when George brood over what the next step he supposed to do, he finished his letter (possibly for Charley) and tried once again in his head, but another characterization come into the sequence, that is nostalgic when the first time he meet Jim. In the flashback scenes, George come to the café as a lonely homosexual person in the bunch of heterosexual armies that just discharge from conscription this scene shoot with a beautiful blooming color with the top light and medium shoot that capture George loneliness, from that scenes we could find how lonely George is, from all the crowded human in café , he choose to be alone that's indicate he also shy to started conversation. the scoring it give the perfect café atmosphere that he was stand there lonely with his bottle of beer and he met Jim that can't find his friend and they talk to each other. After one shoot move to the inside of the café when the café pretty crowded, Jim meet a beautiful lady that want to seduce him, but he refuses by saying he is taken and look at George for a few second. That could be the one indication Jim put interest in George but at the firsts scene we know George as the homosexual person, cannot express their feeling and prefer stay in cool about the interaction, Isay (2006) some gay people hard to describe their feeling and prefer to keep by himself, and society that make a prejudice about gay relationship make

them feel hard to express their love. Same as George that does not showing interest or hard to showing affection to the Jim. From that sequence of event I conclude there are one gay identity that revealed to the audience and some of them does not related to the gay identity.

George Falconer as a Loner

Table **Error! No text of specified style in document..6** Sequence segmentation of loner character of George's characterization

No	Sequence	Description of Sequence	Character Explanation
1	1E	George characterization as an observant person showing when he takes a peek of the neighbor when he got caught, he shies about it.	Refer to the scenes, where George try to take a peek of neighbor showing something that he can't be achieved as the gay man in that time, and show how lonely he is.
2	4F	(flashback)George is homosexual person as he put interest on Jim at the bar.	At the previous discussion, we could see how George as the homosexual person feel excluded in the crowded of heterosexual people in the bar, that shows by, he out from the bar and there is no somebody who accompany him.
Frequency		1	2 Sequence

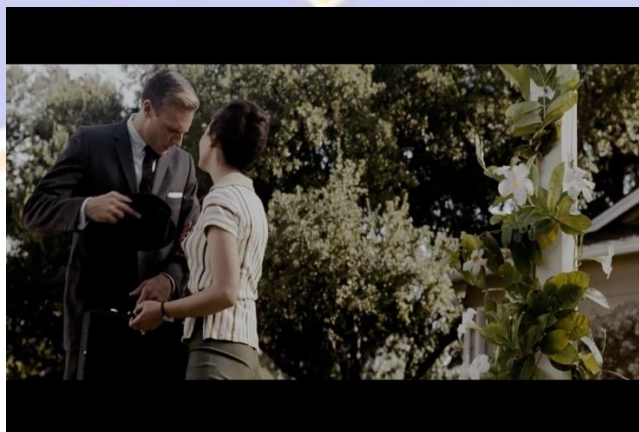


Figure 4. **Error! No text of specified style in document..31** George vision to show what the idealism of perfect family.

This sequence it shows, the variant of nuclear family which is gay men cannot have it at that time, the scene starts when George feel disturbed about the blast of hammer of the daughter play in in the yard, while holding her cat, her mom come out and called her. The son plays with his metal detector that seem like found something, because the metal detector rigging. All the children gathered to one position to dig what the inside that soil that make metal detector ringing. The dad come, it seems like he pissed about something and called, Mrs. Strunk try to comfort him but the dad seems reluctant when she touches his suit, because he knows she touch a dirt. And the last child seems curious about butterfly and crush the to be ashes, the next scenes shows how George look at that event from a small window that directly connected to the neighbor that shoot by a medium shoot with backward movement with still object. And the last scenes that showing the husband still pissed about something, and Mrs. Strunk try to kiss him and go to work, after that she took a rubbish, and caught George who look at her, but she waving her hand. This scene shows the dilemma and variety of member of nuclear family that what make them nuclear, there is wife, husband, and children's, that show how George can't have that kind of dream in that time, because he is gay, and gay people can't adopt child in that time. It shows how lonely he is with his life, how alone he is to face the world and to show no matter dilemma, how problematic the nuclear family is, it's still become a gay man dream someday.



Figure 4.Error! No text of specified style in document..32 **George standing in the crowd**

In the flashback of the scenes, that refer to the first time he met Jim, it shows George as a lonely man, without person who come to him , the scenes start when Jim walk by and enter the café , there is a lot of marine and their couple hanging out there, smoking, drinking, and he out after he got his order, to see Jim who enter the café , and the glimpse of the scenes showing how George character is highlighted in natural way to create the focus effect to him that he is the center of the story that definitely alone.

George Falconer as a Person who Disliked a Child

Table **Error! No text of specified style in document.**7 Sequence segmentation of George's character of disliking children

No	Sequence	Description of Sequence	Character Explanation
1	4A	George as unfriendly to children characterization revealed as he on the way to charley house, George stopped manic child who play a fake pistol and reply with cold statement	The George characterization it shows how cold he is to the child that make an unfriendly persona to the child.
Frequency		1 Sequence	



Figure 4.Error! No text of specified style in document..33 **George and his cynical respond to the child**

That scene is start of Christopher, the name of the child is try to pointing fake gun at him, the scene was taken with medium shoot but after a few second , it could see a George mind , how pissed he is with Christopher and create another scenario in his mind when he pour a water in Christopher face. The scenes were taken with a close-up shoot. And after that back to the reality when George try to show his cynical and little bit intimidating personality, which is that's very disturbing to the child to understand his cynical word, that shows how pissed and unfriendly he is to the child.

Stereotype of Homosexual Characterization

Table **Error! No text of specified style in document..8** Sequence segmentation of George's homosexual character

No	Sequence	Description of Sequence	Explanation
1	1A	George characterization as homosexual showing when he kissed his boyfriend in his dream.	. George homosexual stereotype based on Richard Isay it showing the emotional connection between the men, which is refer to the Point number 11, that is Interested in emotional toward men.
2	1C	(flashback) George characterization as a polite person as he got the news from	From this sequence that showing how the family didn't want George to come or to know about Jim funeral that lead the homosexual stereotype number 5 from

		Jim cousin and could control his voice and manner.	Richard Isay, that is have/fear/feel rejection of family or society.
3	2D	George characterization as homosexual showing when he distracted by a half-naked tennis player while his colleague, Grant discuss about ignorance student, and nuclear war.	From this sequence that showing put his interest to half naked tennis player that lead the homosexual stereotype number 1 from Richard Isay, that is sexual fantasies or fetish entirely toward other men.
4	3A	George as homosexual person as he goes to the bank to takes some of his goods, including the picture of his ex-Jim.	From this sequence that showing put his interest to half naked tennis player that lead the homosexual stereotype number 1 from Richard Isay, that is sexual fantasies or fetish entirely toward other men.
5	3B	(flashback) George as a nostalgic person as he remembers talk about his relationship with charley.	. George homosexual stereotype based on Richard Isay it showing the emotional connection between the men, which is refer to the Point number 11, that is Interested in emotional toward men.
6	3D	George as responsible, polite person as he wanted to buys a new bottle of liquor and they talk to the Carlos after the bumped to each other.	From this sequence that showing put his interest to Carlos that lead the homosexual stereotype number 1 from Richard Isay, that is sexual fantasies or fetish entirely toward other men.
7	3F	George was assumed as a homosexual person as Carlos thought he need some company but he refusing Carlos' offer politely.	From this sequence that showing that George almost fall for the Carlos trick that lead the homosexual stereotype number 5 from Richard Isay, Having Anonymous sexual encounter.
8	3G	The arrival George at home and put record reveled his loneliness and nostalgic on Jim	George homosexual stereotype based on Richard Isay it showing the emotional connection between the men, which is refer to the Point number 11, that is Interested in emotional toward men.
9	4C	George as emotional person as the situation heating up when he Argue about	. From This sequence is showing how George tend to be more open about his relationship with Jim with Charley which is lead to the Richard Isay homosexual

		Charley relationship without thinking about her feeling.	identity number 6, that is coming out from another gay men or best friend.
10	4D	George as homosexual person revealed when Charley stated Jim did not want him alone.	From This sequence is showing how George tend to be more open about his relationship with Jim with Charley which is lead to the Richard Isay homosexual identity number 6, that is coming out from another gay men or best friend.
11	6B	George as Homosexual person when Kenny sees in the medicine's cabinet a nude photo of Jim.	From this sequence that showing put his interest to half naked tennis player that lead the homosexual stereotype number 1 from Richard Isay, that is sexual fantasies or fetish entirely toward other men.
12	7B	The death of George leads him to see Jim again for the long time	George homosexual stereotype based on Richard Isay it showing the emotional connection between the men, which is refer to the Point number 11, that is Interested in emotional toward men.



Having Relationship with Men



Figure 4.34 George kissed Jim in his dream

George characterization as homosexual seen when he kissed his boyfriend in his dream. The camera used Eagle eye medium shot 60° to show that George walking through the snow, getting closer to the Jim's body while their dog death beside him.



Figure Error! No text of specified style in document..35 George lay his body beside Jim body

George lay beside him and kiss him to indicate how love he is with Jim, he does not feel disgusted at all which is that refer to the movie, Jim already dead that revealed how faithful he is to the Jim. The shoot used low key lightning that to show deep emotional feature to the

audience just like sorrow, as Joseph and Dennis (2008) stated how low key lighting just try to put the scene almost entirely on the shadow which is lead to the somber mood scenes, which is work in the snow rage scenes. In the scene when George kiss his boyfriend remain that's indicate love to each other that's mean they could put the same interest as the homosexual person, as the Richard isay stated one of the identities of homosexual person is interested in emotional or sexual toward men. According to the Isay (2009), as the main attraction of the erotic feature that to the other people with the same sex, which is contribute to the kiss, sexual tension, and any erotic experience to the same sex. According to Donald (2003, 53) there are Queer Nation in 1990 held public demonstration has a movement "in your face" that contribute a lot into the affection same sex , that has a purpose to make a statement "*we are here, and you must to get used to it*" same as A Single Man movie that will show to the audience at the first place this is a gay movie. In addition, Jhon (2017) stated about how kiss in homosexuality could be used as the one of the foreplays in pornography, which is indicate kissing partner in homosexual is not taboo as some people thought, because it could be apply in heterosexual too.

Homosexual characterization in that sequence revealed another characterization of George that is faithful that cannot be relate to the homosexual characterization itself.



Figure Error! No text of specified style in document..36 George waking up with ink leak in his bed

In another scene, James wake up from his dream, the shoot was taken with medium level bird eye view with low light. That showing how the leak ink and half naked body of George. This scenes is showing how George still remember about Jim , and the ink represent blood in real life that show how the correlation when he kissed Jim and the blood is transferred as ink , moreover Black (2013) stated how the scene represent how miss he is to the Jim, its make him remember about kissing Jim and the leak ink represent how lack of control George have .



Figure Error! No text of specified style in document..37 George get a rejection from Jim family

In sequence 1c, the shot was taken in living room, eye level extreme close up shot, which is we can find the pure expression of sorrow from George that indicate how sad he is to hear the news about his boyfriend passed away. The living room was very comfortable with dominant soft brown color, and raining outside. George closed the call, takes a deep breath and his expression feel the pain.

Feeling the Rejection of Family or Society



Figure Error! No text of specified style in document..38 George figuring out how he rejected by Jim family

With George cousins stated he know they were together by saying “*It happened late yesterday (accident), but his parents did not want to call you*” This dialogue indicate the rejection of George and Jim relationship which is Jim parent did not accept the fact the relationship between them by try to hide Jim’s accident. As Richard (2009) stated some of homosexual people gain a rejection from the family, which is lead to one of the gay identities that is Have/fear/feel rejection of family or society. According to Isay (2009) Gay can’t express them as heterosexual do, because they have social pressure. Such in the young age gay people tend to be more private about their life because somehow in their childhood they gain some rejection from their peer and considered that something wrong with them. In addition, since 2005, family rejection because sexual orientation may lead to the suicide according to the Institute of Medicine of National Academy that cited D’Augelli (2005). Same as Ryan that cited by the Institute of Medicine of National Academy (2010) study about 224 teenagers in 21-25 found has highest suicide rate because rejection from the family. That’s no wonder homosexual person feel afraid about rejection of society, as we can see George not look like what gay supposed to stereotype. He is masculine, polite, dandy without feminine side.

Having Sexual Fantasies Toward Men



Figure Error! No text of specified style in document..39 George pays attention to the tennis player

In sequence 2d, this is located outside campus. The camera used medium shot, eye level with backward motion to follow the character movement, and move fast to extreme close up shot while Close up of student half naked body smashing the ball with a slow motion that makes every single throb of the body noticeable. The color changes the filter and the sweat glistening over the body. In the one of the scene George feel distracted by half naked men who play tennis is the one of the homosexual characterizations as sexual fantasies almost entirely toward other men, which is it could be understand because the definition of homosexual is sexually attracted to the same sex.

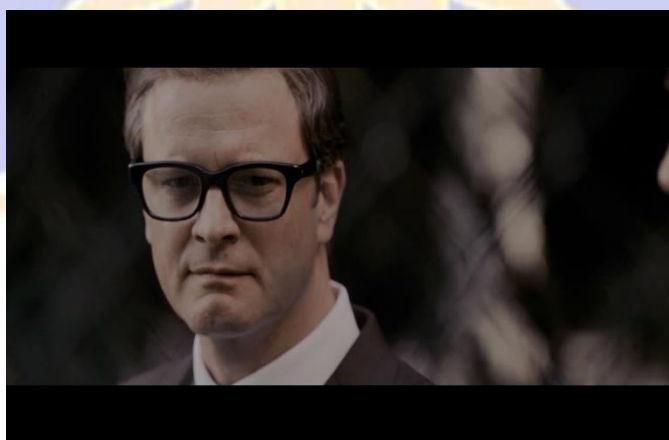


Figure 4.40 George looking at tennis player while listen Grant argument

In that scene we could see the slow motion of half-naked is adding to create some intense observation of George views, to show how observant or how interest he is toward men bodies. from that scene that reveled George characterization that is observant, and somehow, he did not pay attention to their peer conversation about nuclear war, that indicate he serious to pay attention to the half-naked student who play tennis. The correlation between George and their interest to the male body as Isay (2009) stated homosexual has dominant “erotic” attraction to the another male. Which is what George interested in male could be a fetish. Fetish come into a lot category, because homosexual has their own preference same as heterosexual, for the example Asian, bear, black, college, daddy, hunks and “twink” and so on, from this we could see how the range of the masculinity it does not prof any orientation, Mercer (2017).

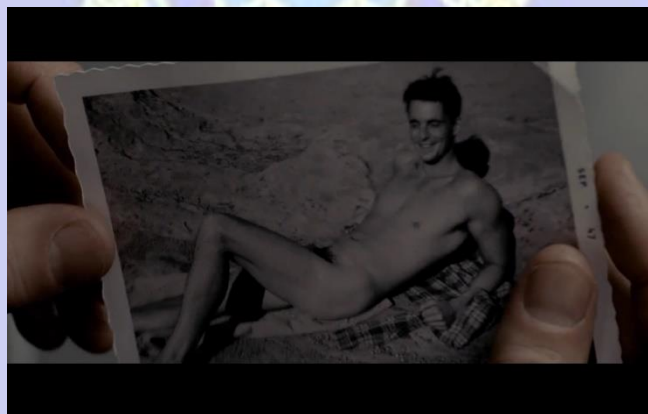


Figure Error! No text of specified style in document..41 George look at the Jim naked picture

George as homosexual person as he goes to the bank to takes some of his goods, including the picture of his ex-Jim. The shot 3a was taken in the bank where George check on their goods , and he found the naked picture of the Jim, Saving naked male picture is not indication that person is homosexual, but in this scene we know George put that picture on his

bank account that is make him has a motive or interest to that picture. and we know that picture is the Jim picture that indicate he still in love or at least have an interest in Jim which is lead to the Isay (2009) homosexual identification as sexual fantasy toward other male or interested emotional toward men. Moreover, it could categorize as fetish that attract to the male body. Long before social media era, printed out magazine with homoerotic content, as we know such as Tom Finland, which is his artwork influenced by lumberjack, Fisherman, farm worker and rough men outside in his young age. And it influences him to make a pornographic drawing because it intended to make sexual excitement which is that extremely rare in that time. Ferguson (2018). As additional of correlation of naked men and homosexual, we could look at pre-web or pre digital era, which is print media it's still has contribution of sexual fetish of homosexual in that time (Mercer, 2017)

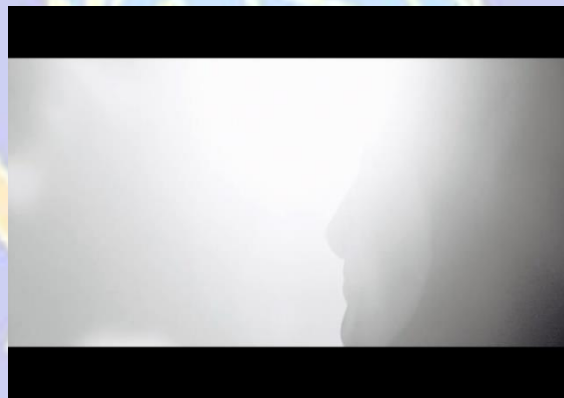


Figure Error! No text of specified style in document..42 Flashback when Jim and George had a vacation on the beach

The flashback scene was taken from grayscale filter which is that influence by George emotional state in that time. Start from very blur by the light super close up low angle shot and move to the Jim silhouette with back lightning, and the conversation scene was taken by medium shot, with Jim and George lay on the shore of the beach.



Figure Error! No text of specified style in document..43 Jim Figuring out George and Charley relationship

Their conversation is about George relationship with Charley.

George (in): What would you like to know?

Jim (in): I don't know. You seem very intimate, I guess.

From this conversation, there something I could say curiosity of Jim about George and Charley relationship, but in the end, George stated Charley is his close friend,

George (in): And we were very close friends but that's all.

In that scene not only showing their relationship as couple but also showing how George showing his preferences by stated, "Because I fall in love with men". Which is lead to the, coming out to another gay men/best friend, interested in emotional toward men, but it become stereotype toward number key number 8, Avoid emotional attachment toward short term relationship, say (2009). As the socialization function, coming out to the other is the term of self-labeling, recognizing him, not deny about sexual orientation to the other person or society. that needed if the homosexual people need to overcome their feeling and mutual loving such as relationship with sexual or non-sexual involvement, Isay (2009). In addition, the term of coming out is from olden days. Where all the aristocrat using that term as where the young society debut in parade with dresses before first world war that referring come out into the

society. Moreover, today they use that slang coming out refer to “move”, or recognize him as a queer identity. Dawson (2014).

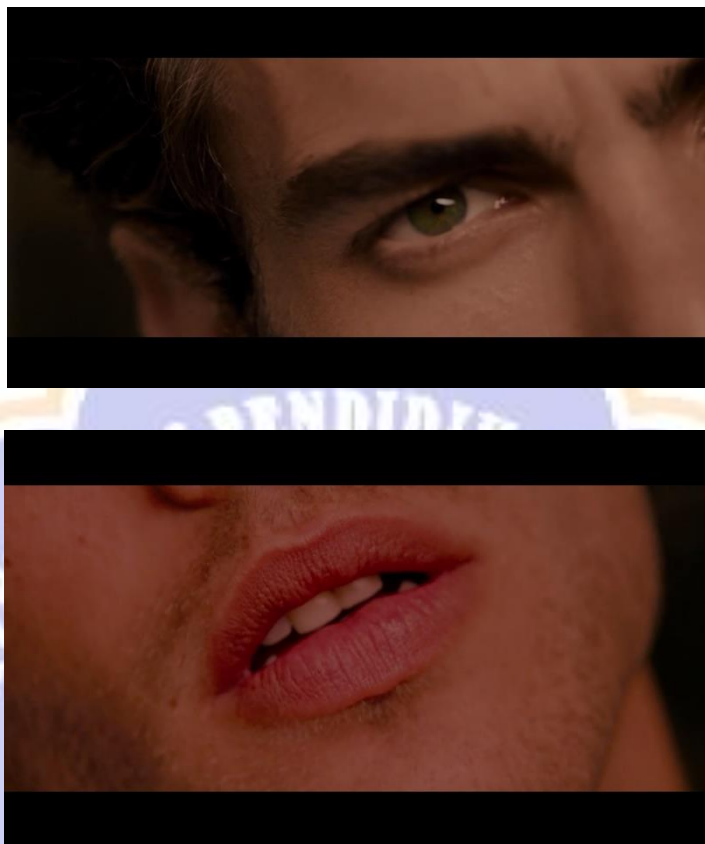


Figure Error! No text of specified style in document..44 George pay attention to Carlos face

The sequence 3d shot taken in very slow transition with super close up shot that showing every detail of Carlos face feature. Carlos has quiff hairstyle just like James dean, with striking face feature such as sharp jaw line, pointed nose and green eyes, bushy eyebrow, and propositional lean body. In the one of the scene George pay attention to the Carlos lips motion and face feature such as eyes and eyebrow is the one of the homosexual characterizations as Sexual fantasies or fetish entirely toward other men, which is it could be understand because the definition of homosexual is sexually attracted to the same sex. In that scene we could see the slow motion of lip moving is adding to create some intense observation of George views, to show how observant or how interest he is toward Carlos. George sexual

desire not separated from fetish for a something that could trigger sexual excitement, according to the Binet (1887), Ebbing (1886), Ellis (1906) and Hirschfeld (1956) that cited by Kafka (2009) stated fetish is intense sexual excitement for non-living object or specifically body part that could correlate to the person, or living creature. Moreover, Houston (2016) stated sexual fetish as the simply sexual interest about object, situation, and part of human body that result of sexual euphoria or excitement to the human that somehow could be gratification without consent to the person. In addition, Mercer (2017) stated how gay pornographic could use fetish as the preference to categorize some video, such as young white person, feet, leather, latex, and BDSM. In addition, it shows how this scene just try to put aside the illegality of homosexual in that time and to create normalization gay lifestyle in George environment such as, Carlos interaction, drink with Kenny, and also amorous interaction with Jim in flashback, King (2014). Similarly, what king have done, Steven (2014) has stated how the interaction of George to another male character it showing the contrast different homosexual live their live, while George worries about his visibility, while Jim and Kenny feel comfortable with their identity life, and even Carlos who live their live in it.

Promiscuous



Figure 4.Error! No text of specified style in document..45 **Gorge refuse Carlos' offer**

George assumed as a homosexual person as Carlos thought he need some company but he refused Carlos' offer politely. The shoot was taken with and the color filter combination is Red, white, black, grey, brown, color with the top lightning from sunset. As Richard Isay stated in his book, being homosexual and their development, there are two-type relationship of homosexual, there is long term which is last long forever or even two year, and short-term relationship Isay (2009). As the homosexual people tend to be have more short-term relationship, more than heterosexual. which is lead to the random encounter or one-night stand which is occur in public restrooms, gay movie houses, bookstores with booths, or parks and bathhouses which is Carlos assume George looking for short term relationship which is lead to the gay identity number 7 that is anonymous sexual encounter Isay (2009). According warren (1974) that cited by Taub (2010) stated how cruising or gay encounter for sex, and consider the as hedonistic activity in gay community that involved sex without emotional commitment which is that can find in big city and usually in public spaces where the gay community can interact to each other restroom, park, beach, gay x rated theater. In another research about gay social activity such as cruising, according to Humpreys (1970) that cited by Recee (2003) how cruising for sex in out boundaries ethical professional on the campus, because how the campus

become the field of cruising for gay encounter for sexual meeting. However, that public spaces are not the place for meet but it could be use as sexual interaction that occur the risk of the health issue and spreading HIV and Aids in campus. In addition, Churchill (1971) in his book covered the issue about how the homosexual in large city tend to be more open about sexual encounter and used adopted name such as Midnight Mae to cruise in midnight in public park. Moreover, according to Mercer (2017) after pre digital download, there are website that offering public spaces to meet for sex, and the area is getting wider every year. In addition, in such of pornography aspect, cruising could be theme of gay porn movie that influence few studios to make movie about older male cruise to find you boys for sex.

Coming Out



Figure Error! No text of specified style in document..46 George and Jim Together

In the previous analysis Isay (2009) stated there is two types of relationship that happen in homosexual scheme there is long and short which is George has one relationship with Jim in the past, and this nostalgic scenes that indicate George has emotional connection to the Jim which is lead to the gay identity number 7 interested emotional toward men, which is they coming out to each other. The scene started with George indirectly look at the phonograph, and he remember the time when Jim still with him. Sitting on sofa, read a book and make a

light conversation. The filter of video changes and getting warmer. With eye level medium shot, that could capture quality time between George and Jim, with their two dogs. From this scene I assume they have very healthy relationship from the beginning with, and there is a lot of consideration between two people, to step up into this kind of relationship, from the sequence 3g we could see how different characterization between Jim and George , Jim (younger) always have jolly, and cheerful characteristic and prefer chick literature such as breakfast at Tiffany By Truman Capote, while George (older) Characterization it's more like cold , and serious , also he prefer Franz Kafka Novel, Metamorphosis.

Jim (in): what are you reading anyway?

George (in): (showing their novel that he read)

Jim(in): Oh god, not depressing crap again. (with joke tone)

George (in): what highbrow work of fiction might you reading?

Jim(in): (showing his novel)

According to Isay (2006) George was in the stage of staying in love , which is mostly gay people who has good self-esteem, usually could express their love and make commitment about it, because they think, they deserve love from someone and vice versa, and they feel they deserve to be love because in their childhood they does not feel love. Moreover Isay (2009) stated about how gay relationship complement each other, based on the age group, race, personality that complete each other, that influence couple to grow in their mind and their relationship, that could make sure the relationship lasts longer, different with heterosexual couples which dissimilarities could make a disruption in relationship.



Figure Error! No text of specified style in document..47 George and Charley after dinner

In sequence 4c we see, how Charley is one from few people that George coming out with. The scene started from eye level long shot where charley and George enter classic vintage rest room, this type of long shot could capture George and charley activity at the same time, with peach color, there are two cabinets table each side of the room with big mirror hanging on the wall. From the outside we could see plant room that fertilized well, and from the above there is small chandelier. Half round sofa looks so comfortable include with golden round table, beside the room there is curtain. The source of the lightning is just from each corner of the room, the scoring from cricket enhance the intimacy with them, they start to dance and it show charley still have feeling on him, they dance together and situation heated because charley start to questioning Jim and George relationship as substitute.



Figure Error! No text of specified style in document..48 George discover Charley thought about Jims

Charley (*in*): Geo, let's be honest, what you and Jim had together was wonderful but...

Charley (*in*): wasn't it really just a substitute for something else?

George (*in*): Is that really what you think after all of these years?

George (*in*): And by the way, what is so real about your relationship with Richard?

George (*in*): He left you after nine years!

George (*in*): Jim and I were together for sixteen years!

These scenes show how problematic gay relationship with their girl-friend that somehow, she will put interest in her gay friend that could make misconception of what friend actually is, and somewhat that hint homophobic reaction that homosexual relationship just mimicking or want to like "normal" looking relationship which is that's not the something what a "fag hag" would say in their gay best friend and after giving one last kiss before George leaves she still refuse the condition and hope George giving him one last chance. According to Isay (2009) , coming out is the one of homo-socialization aspect that make the homosexual people has their own development , to socialize, that could be positive

trait for them, however it could be limited by society, geography, vocation, viability, which is some of gay people does not have or must not to come out because that factor, from George Falconer example we could see Charley is the one from few people that George coming out with because the society in that time consider gay as taboo. Moreover King (2013) share her view about the concept of “fag hag” that Charley live in it, is the one of reflection how it could damage relationship because feeling attachment in “fag-hag” relationship that could damage the relationship because launches some heteronormative lament about heterosexual relationship that put into homosexual one.



Figure Error! No text of specified style in document..49 Charley accompany George

This George characterization as homosexual showing up again from another character which is Charley knows George had relationship with Jim, which is long term relationship. The scene was taken with medium shot with tracking backward to show George and Charley walk together with the backlight to create gloom effect. From this scene we could see George Love Charley as platonic love that, very close but Charley always has more feeling to him that stated on dialogue.

Charley (in): You never really did take me seriously, did you George?

George (in): I tried to Charley. Remember?

A long time ago.

It shows how Charley always have hope for George, that someday he will love her as he loves Jim. In addition. In addition, Dawson (2014) stated friend or close friend is the perfect place for coming out. And usually coming out to the close friend that really know about you. And it will be hard to coming out for someone that put interest in you. Form this case we could see there is two things that George face it, first there is charley as supportive friend that know about George for the long time, and two, Charley as the person who put interest in George.

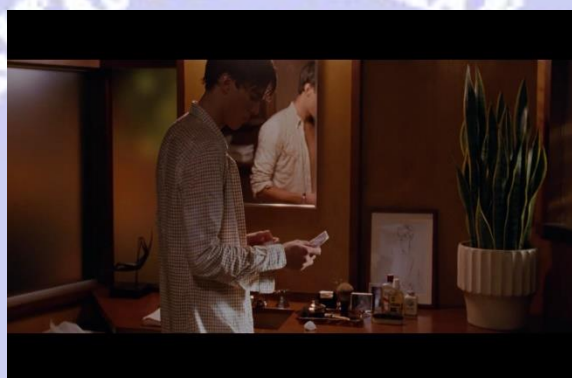


Figure Error! No text of specified style in document..50 Kenny discover Jim picture in a drawer

In one scene Kenny open the drawer to check if there is any medicine for George wound, he found out a picture of George ex-boyfriend. Put or saving naked picture of partner is the one intimacy thing in the relationship, which we assume George put interest in that picture. This is lead to the Richard Isay (2009) homosexual identification as sexual fantasy toward other male or interested emotional toward men. One of the centerfolds in this theory is Kenny and his bi-curiosity that could be the one of the phases of homosexual, that could be deny or accept himself as bisexual. Albury (2015) stated how bi-curious is the way to self-labeling himself that could be related to desire, aspiration to embody sexual practice. That I

conclude bi-curiosity in Kenny is the one way to explore himself or to get to know what he desires. Moreover, long before social media era, printed out magazine with homoerotic content, as we know such as Tom Finland, which is his artwork influenced by lumberjack, Fisherman, farm worker and rough men outside in his young age. And it influences him to make a pornographic drawing because it intended to make sexual excitement which is that extremely rare in that time. Ferguson (2018). As additional of correlation of naked men and homosexual, we could look at pre-web or pre digital era, which is print media it's still has contribution of sexual fetish of homosexual in that time. Mercer (2017).



Figure Error! No text of specified style in document..51 Jim kiss George

In the last scene of the movie we see Jim kiss George just like what George have done in the first scene, as the Richard Isay (2009) stated one of the identities of homosexual person is interested in emotional or sexual toward men. The scene was taken with high angle medium shot with George lay on the floor because his heart attack. Step by step someone in the suit approaching George and the scene move to the close up shoot to see George agony in detail, and the scene move to the top view where the vision of the George become blur, he twitching his eyes, and George vision getting clear, Jim face was shoot by point of view close up shoot where Jim face getting closer, he kiss George and walk backward slowly and the shot was closed by George dies on the floor, and the color of the scene become grey just like George

feeling as the usual . The correlation between George and their interest to the male body as Isay (2009) stated homosexual has dominant “erotic” attraction to the another male. Which is what George interested in male could be a fetish. Fetish come into a lot category, because homosexual has their own preference same as heterosexual, for the example Asian, bear, black, college, daddy, hunks and twink and so on, from this we could see how the range of the masculinity it does not prof any orientation, Mercer (2017).

From all the homosexual stereotype that movie show from George characterization, he only shows 6 of homosexual characterization which is only half of the Richard Isay homosexual characterizations.

George Falconer’s Gay Identity out of Isay’s Homosexual Characterizations

There are some of gay identity that does not meet the gay characterization of George Falconer. There is some reason why that gay identity does not meet the Georg characterization. First of all, some of gay identity that does not relevant to show in the movie, secondly, he does not have that characterization, and the last one is that characterization could misleading to be stereotype. And could be dangerous for the reader, viewer, listener who catch al the stereotype and apply them in real life activity, that they could try to generalize all gay have some traits that in the reality, not every homosexual has it. It’s in the line with Dawson (2014) that stated this stereotype have a dangerous level same as “Muslim terrorist” stereotype, instead talking about terrorist, some people tend to make argument about Muslim militant, Muslim Bomber , and it always associate with the religion which is it could lead to another problem, which is as long as Muslim religion linked up with extremist or terrorist , it could shape the stereotype all the Muslims is terrorist, which is it’s not one hundred percent true.

Characterization design for everybody is different it’s made one gay identity has a lot of trait that cannot be generalize to one or another and the trait of human could be infinite, and it

cannot stay on the gay stereotype, just like one to another. For the example, all the guys must be in fitness location to have a bulky body to attract another gay, it just like dehumanize some gay who does not pay attention to the body. As Dawson (2014) stated Each Homosexual has a lot variety range of trait same as heterosexual that cannot be define by one or two trait that could make them a stereotype. And there is some of the gay identity that cannot meet the characterization of George Falconer in the Single man movie (2009).

All Gay is Feminine

As Rapp (2013) stated not all homosexual is effeminate, flamboyant, fashionable, emotional, loud and hypersensitivity, yet some people tend to be shocked when to find out one public figure is gay, it's because does not have a "gay" characteristic in their perspective. That could be one foundation how the stereotype could generalize their perspective about homosexual. In the part of the homosexual group, effeminate gay itself become something that gay people terrified to associate of, even though in LGBT community they have Drag queen, that could be symbolize as female impersonator of effeminate gay. And the gay still consider effeminate gay is something that terrified of. As Dawson (2014) stated gay men tend to be more eager to show his masculinity because male domination the the homosexual world is infected gay male with notion male is better that could lead to the misogynistic, because it seem like gay does not want to associated anything with female, reject effeminate norm and try to create their "normalization". This is why a single man movie does not show anything but masculinity, it's because that's not relaxant with George Characterization and the background is 1960 which is gay consider as taboo, and gay people try to hide any gay characteristic that could be led to gay notion.

Sexual Fantasies almost Entirely toward Other Men

Heteronormative value is the something that what gay people feel when it come to the sex partner, because it could end up as misogynist. Because the men will put a lot of heteronormative value, such as playboy, womanizer, and and when it come to women and gay, it become something that undervalued. As Dawson (2014) stated it will become misogynists if promiscuous men are legend and put the otherwise promiscuous women and homosexual men will get dragged to the core about having a lot sexual partner.

And this stereotype cannot be applied in heterosexual men, because it can be valuable, but the point is we must to appreciate someone choices, and not to think about how slut they are, and keep the religion for ourselves because it's all about personal. As Dawson (2014) stated the choices is yours, and nobody should give judgement about sexual activity that you have, weather you chose to be monogamous person or promiscuous person.

Having Difficulty of being Masculine

Calling all the gay have a difficulty to to expressing a masculinity is the something that could be superficial, because some of homosexual is nothing to do with the masculinity and effeminate behavior, instead, in queer are we have effeminate homosexual, which is that's part of queer and LGBT member. As Dawson (2014) stated the word Camp often applied to the gay people who have excessive flamboyant style, extravagance make up and usually have effeminate style. And not all of the homosexual person has that kind of style instead in the last discussion it could find event some of homosexual cannot find that camp style is suit for them and looking partner who has less of camp style. and basically, the accusation homosexual cannot express their masculinity is exist not all of them.

As mercer (2017) stated some of the homosexual use term “straight act” that use to tell how the representation of masculinity in straight people will sell more and as the cope mechanism to show how the erotized heterosexual it show how the homosexual can be

complicit to their own oppression because they believe only hetero people who have that kind of masculinity.

Believe in Homosexuality as a Sin

Homosexuality has big connection with the religion, since a lot of religion who condemn that kind of lifestyle. And surprisingly it cannot be found in the movie, not because it's does not meet the stereotype or the characterization it because it does not relevant with characterization of George. George is the kind person but does not have any religious belief in him that shows into the movie. That's why believe homosexuality is the sin that's not applicable into the movie, because George is not the religious person.

Even though this movie does not show what the religion believe about homosexuality, but it does show how the George life is just like a searching spiritual believe, from the start he desperate and agony about his fiancé's death, try to kill himself , try to apricate what world give to him and in the end he find a peace. This scenario is foundation religious interpretation of Christopher Isherwood himself as the person who follows Vedanta Principle. As Marsh (2015) stated how the novel itself inspires about the unifying power of *Param brahman* principle that's how becoming the George is spiritual experience how he meets the day, living his life, and death, and unified to the highest one and peace.

Had No Interest in Sport

One of the most common stereotypes about gay men, is about he they do not have interest in sport which is could give an illusion of all the person who involved in sport is straight, which is that's not one hundred percent true, so the the gay athletes who into the sport just like covering themselves in masculinity, because masculinity is just like a straight symbol for them and could link as oppression of minority and homophobic tendency. As Anderson (2005) stated how sport is the one of intuitional who have the big homophobic tendency that

athlete must to show their hypermasculinity to make believe, there is no gay people there. For them homosexuality is related to the weaknesses, wimpy, camp, and the masculinity is the symbol of straightness's but is not necessary deny the fact, there's no correlation between sexual orientation and their ability to compete in sport.

The stigma still grows as the stereotype to the in the closet person, the homosexual person who is denial, or afraid to accept their sexual orientation and it became toxic environment which lead to the superficial thought about how sport can make them feel straighter than before. as Pronger (1990) stated in their book the arena of masculinity, sport intuitional could attract some gay people to come because the low understanding about what masculinity have to do with the homosexuality, and it could be one of the perfect places to hide themselves from prejudice, because it could put away feminine stigma that what stereotype have done in homosexuality.

Pollack (1999) stated how the afraid of oppression could lead the to use term "boy code" which is the method who could put the boy into the gender qualification that boy "supposed" to live in that way even when they feel stranger about themselves. While the sport is the place to hide from the reality, that could be form of the privacy that surprisingly a lot of homosexual people use it as defend mechanism such as don't ask don't tell. That use to understand there is homosexual in this team or intuition, but we don't talk about it. Britton and William (1995) but Anderson (2005) stated it could make homosexual person feel included in the team even though some of them may know their sexual orientation but still consider that thing is private and no one should make an issue about it on the side effect about it is the athlete reluctant to talk about their problem and their sexuality to the peer , because don't ask don't tell mean , we don't care and we didn't want to know about it.

Research Implication

This chapter could explain how this research could be apply in real life. And this chapter will be divided by two part, they are research implication toward people in society and research implication for readers.

Research Implication for Students

This sub-sub chapter will explain how this research could apply and influence the viewer of reader in especially student in general. This study believed has a positive impact for the changing of view of student not only toward a homosexuality but also diversity. Since a queer study learn about LGBT problem and how hard community accept them not only as person but but also human being. It believes to stop a negative stereotype and prejudice toward LGBTQ people, and it believed to make a learning process run well without any bully and harrasment toward them. This is in line with Kathleen Conn in her book bullying and harassment (a legal guide for an educator) (2004) student has right to be free from bullying environment in the school, to create a better earning environment and study for them and supported by report from Lamda Defense Report Fund (2002) that report stated over 60 percent of LGBTQ student and minority does not feel safe in the school that therefore, and 80 percent has experiencing verbal harassment at school because their sexual orientation and belief.

Research Implication for EFL Students

This sub-sub chapter explains the research implication for EFL students. This study could be use as the one from many references for student who want to learn more about queer and movie. The researcher who want to analyse and focus to the homosexuality before 1980 which , and to show how it could reflect the society nowadays , and it could show to the researcher to open their eyes for some of view that could be misleading them form some fact that actually turn out to be a stereotype.

Research Implication for Teachers

This sub-sub chapter explains the research implication for teachers in general. Since the ideology of queer study is diversity, the teacher could be handle the class because somehow student cannot accept a different thing in their peer, such as disability, or race , and religion. Therefore, the role of teacher as the key of the classroom could be run well because they could apply diversity and general and the student tend be more accept about diversity. And the teacher could use this as the example to teach the student to respect diversity view of their peers.

Research Implication for EFL Teachers

This research could help the teacher and lecturer and the supplement of the education. This research could be useful as the useful to guide the toleration and diversity in environment, such as sexual orientation, which is very taboo to talk, because harassment based on the sexual orientation not definable enough to bring to the court because that's not same as gender based sexual orientation because there is no constitution (Conn, 2014) , because of that, as the teacher that bring the positive environment to the class should handle this kind of situation , because some of the prejudice could bring the problem in the learning process. Therefore, this research will be very useful in EFL for young learners to understand more about bullying and prejudice because it could hurt somebody and become indirect bullying. That's covering not only sexual orientation, but also sexual activity, spread rumors someone family, and made up statement that could ruin somebody. and usually that could be happen in the class peers that started by talking in the back and spread maliciously like virus, and student could considerate this research as the understanding of sexual orientation not based on appearance, behavior, or character (Tarshis, 2010).and then the student wishes could to be wise into put some prejudice to somebody without fact.

Research Implication for Parents

This sub-sub chapter explains the research implication for parents. This study believes could give an educational support for the parent. Because this study will open some new perspective from misleading parenting system that could be done in Indonesia or even in some Asian country this this is in line with Ryan, Huebner, Diaz, & Sanchez argument in Russel (2018) how concern parent in push the children into the mold based on the belief and use the tactic that could damage the children such as such as trying to change their child's sexual orientation; excluding them from family events and activities to discourage, deny, or minimize their identity; or using religion to prevent or change their sexual orientation.

Research Implication for Society

This sub-sub chapter explains the research implication for the society in general. This study is believed to have a huge impact toward the society in general specially to fix their stereotype about LGBT in society. the society tend to be paranoid about something new and taboo such as sexual orientation and prejudice about them, and somehow this miss conception could be a stereotype for long time and become faux fact that everybody agrees without any research and prior knowledge to support the accusation from that misconception. As Dawson (2014) stated stereotype is rubbish and dehumanizing people because that allow the bigot create the reasons to hate them as the human and create misconception that could stay in society and even become something to generalize some group because one or two things say something negative about that. And then this research could open up some possibility of perspective that one group cannot be generalize based on the behavior, character, and sexual orientation.