



LAMPIRAN

Lampiran 1. Perhitungan Nilai R_f Hasil Analisis TLC Ekstrak pekat dari Nudibranch *Phyllidia picta*

$$R_f = \frac{\text{Jarak yang ditempuh oleh komponen (cm)}}{\text{Jarak yang ditempuh oleh pelarut (cm)}}$$

1. Noda 1

$$R_f = \frac{4 \text{ cm}}{4,5 \text{ cm}} = 0,888$$

2. Noda 2

$$R_f = \frac{3,9 \text{ cm}}{4,5 \text{ cm}} = 0,866$$

3. Noda 3

$$R_f = \frac{3,1 \text{ cm}}{4,5 \text{ cm}} = 0,688$$

4. Noda 4

$$R_f = \frac{2,2 \text{ cm}}{4,5 \text{ cm}} = 0,488$$

5. Noda 5

$$R_f = \frac{0,8 \text{ cm}}{4,5 \text{ cm}} = 0,177$$



Lampiran 2. Profil GC-MS Ekstrak Pekat Nudibranch *Phyllidia picta*

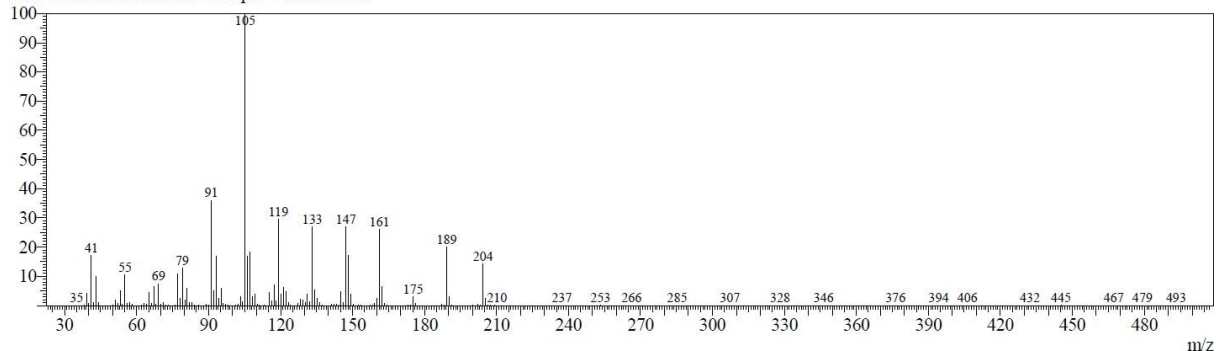
Hasil Penelusuran *Similarity Search* Berdasarkan Database Senyawa 1-10

Line#:1 R.Time:7.850(Scan#:971)

MassPeaks:297

RawMode:Averaged 7.845-7.855(970-972) BasePeak:105(58193)

BG Mode:Calc. from Peak Group 1 - Event 1 Scan

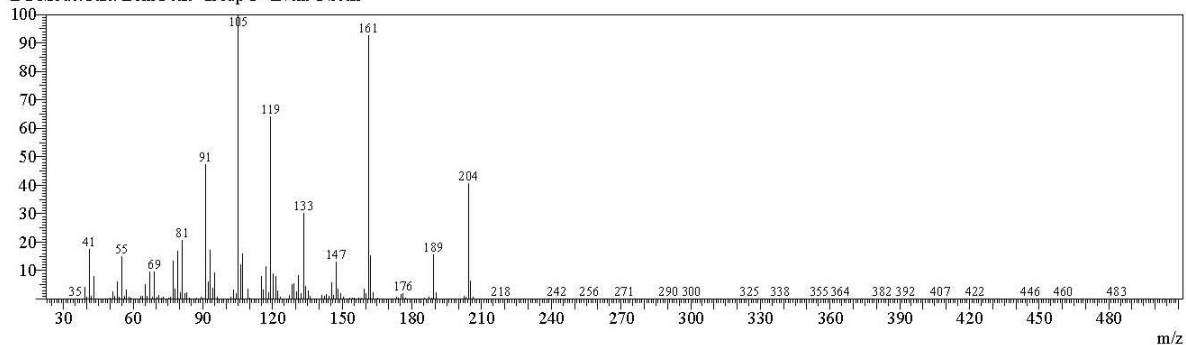


Line#:2 R.Time:8.095(Scan#:1020)

MassPeaks:278

RawMode:Averaged 8.090-8.100(1019-1021) BasePeak:105(54021)

BG Mode:Calc. from Peak Group 1 - Event 1 Scan

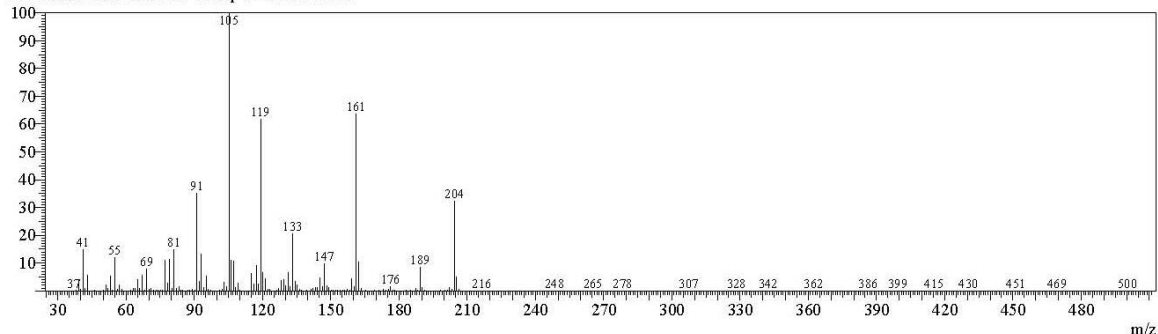


Line#:3 R.Time:8.460(Scan#:1093)

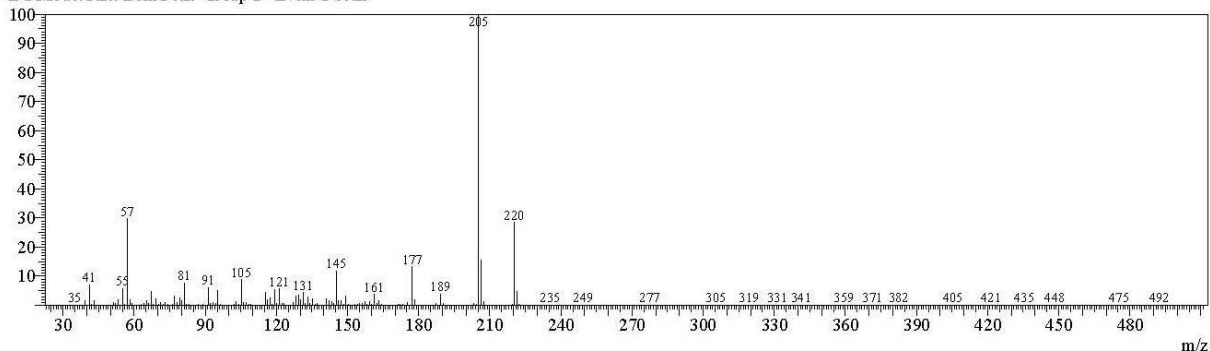
MassPeaks:317

RawMode:Averaged 8.455-8.465(1092-1094) BasePeak:105(98585)

BG Mode:Calc. from Peak Group 1 - Event 1 Scan



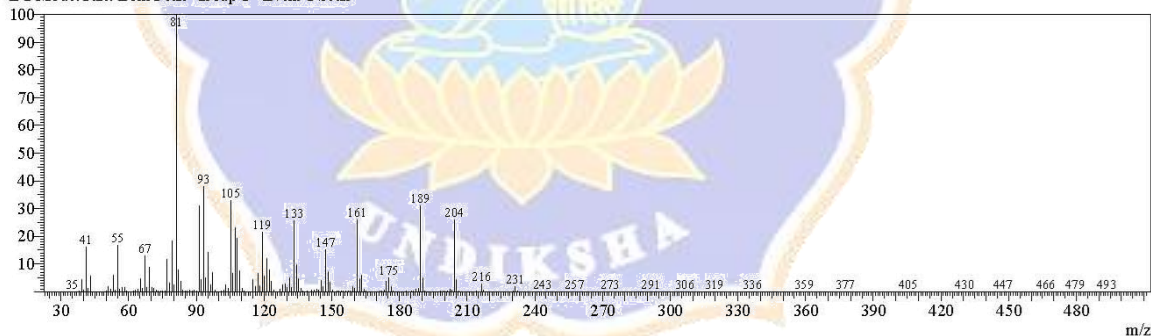
Line#:4 R.Time:8.625(Scan#:1126)
 MassPeaks:290
 RawMode:Averaged 8.620-8.630(1125-1127) BasePeak:205(250125)
 BG Mode:Calc. from Peak Group 1 - Event 1 Scan



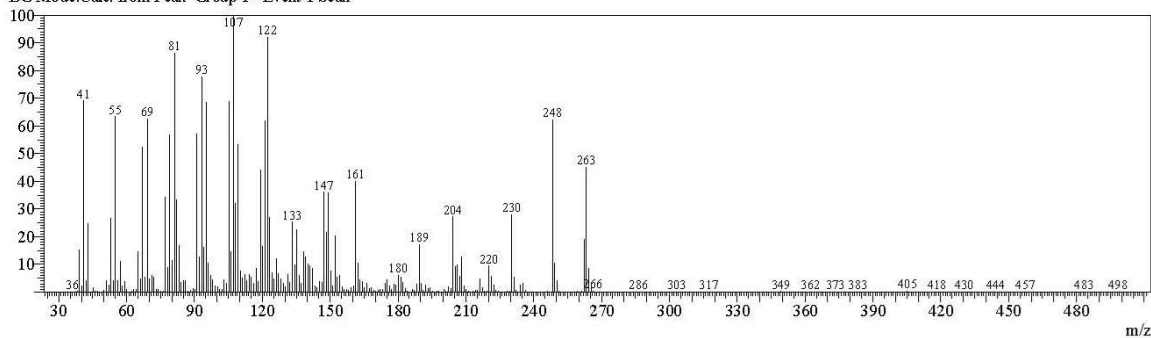
Line#:5 R.Time:8.870(Scan#:1175)
 MassPeaks:278
 RawMode:Averaged 8.865-8.875(1174-1176) BasePeak:119(109979)
 BG Mode:Calc. from Peak Group 1 - Event 1 Scan



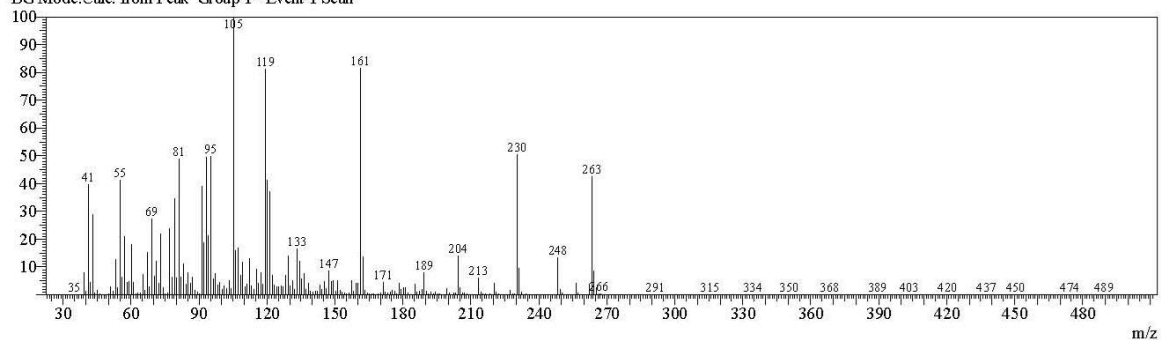
Line#:6 R.Time:10.210(Scan#:1443)
 MassPeaks:309
 RawMode:Averaged 10.205-10.215(1442-1444) BasePeak:81(348105)
 BG Mode:Calc. from Peak Group 1 - Event 1 Scan



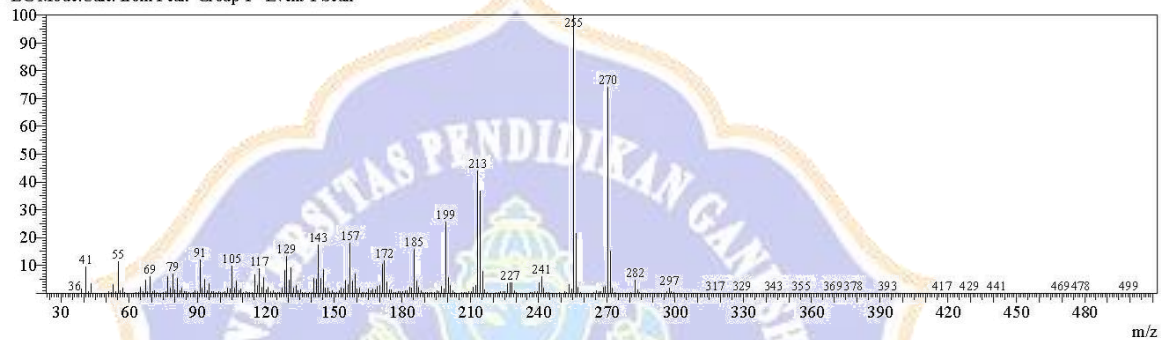
Line#:7 R.Time:11.520(Scan#:1705)
 MassPeaks:318
 RawMode:Averaged 11.515-11.525(1704-1706) BasePeak:107(18587)
 BG Mode:Calc. from Peak Group 1 - Event 1 Scan



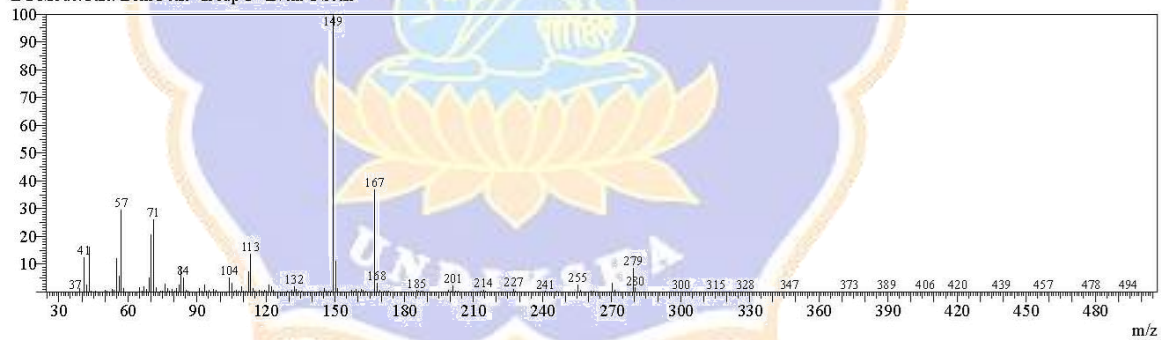
Line#:8 R.Time:11.930(Scan#:1787)
MassPeaks:337
RawMode:Averaged 11.925-11.935(1786-1788) BasePeak:105(26582)
BG Mode:Calc. from Peak Group 1 - Event 1 Scan



Line#:9 R.Time:13.620(Scan#:2125)
MassPeaks:350
RawMode:Averaged 13.615-13.625(2124-2126) BasePeak:255(179744)
BG Mode:Calc. from Peak Group 1 - Event 1 Scan



Line#:10 R.Time:15.975(Scan#:2596)
MassPeaks:343
RawMode:Averaged 15.970-15.980(2595-2597) BasePeak:149(161376)
BG Mode:Calc. from Peak Group 1 - Event 1 Scan



Lampiran 3. Dokumentasi Penelitian



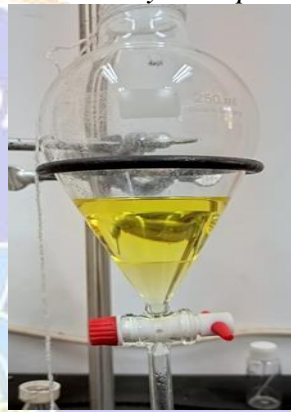
Nudibranch Phyllidia picta



Proses sonikasi ekstrak nudibranch
Phyllidia picta



Proses menimbang ekstrak kasar nudibranch
phyllidia picta



Proses partisi



Alat Lampu UV yang digunakan



Proses KLT nudibranch
Phyllidia picta



Instrumen GC-MS yang digunakan

