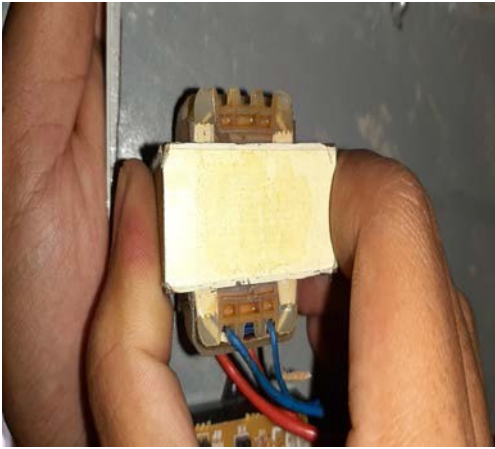


# LAMPIRAN





Pemasangan Transformator



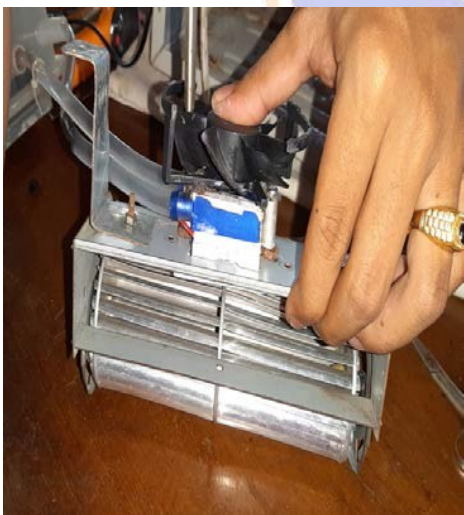
Pemasangan Motor Fan



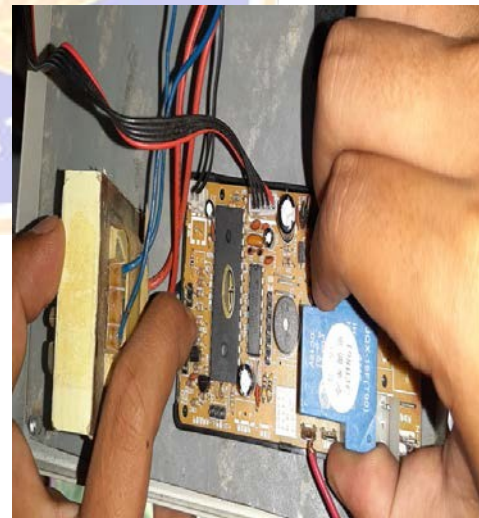
Pemasangan Reservoir dan Pompa



Pemasangan Peltier dan Cooling Heatsink

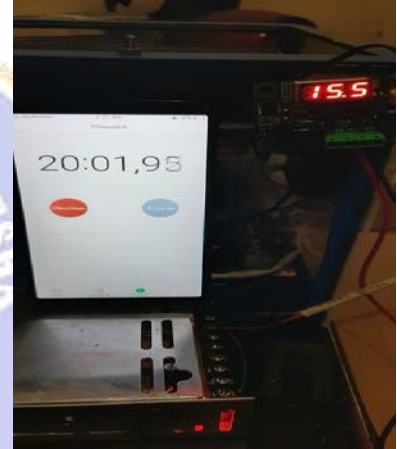
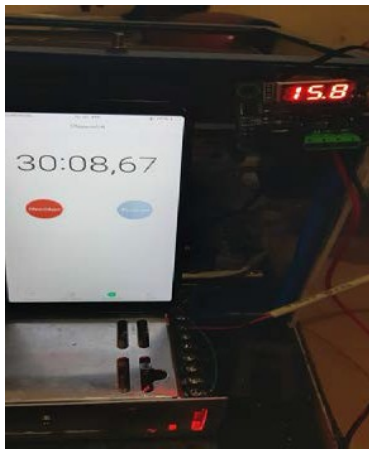
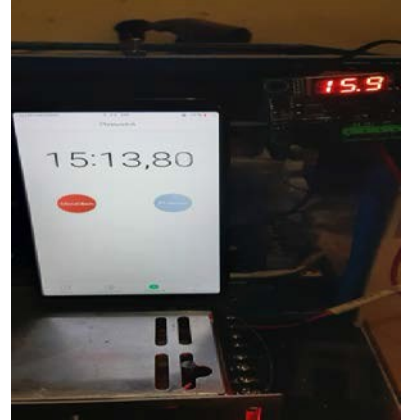


Pemasangan Fan



Pemasangan PCB Modul

Hasil pertama pengujian Air cooler dari 5 menit sampai 30 menit



Hasil kedua pengujian Air cooler dari 5 menit sampai 30 menit

